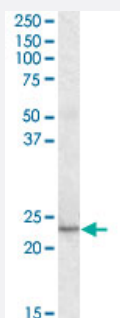


KLF16 polyclonal antibody

Catalog # PAB6182

Size 100 ug

Applications



Western Blot (Tissue lysate)

KLF16 polyclonal antibody (Cat # PAB6182) (0.3 ug/mL) staining of human heart lysate (35 ug protein in RIPA buffer). Primary incubation was 1 hour. Detected by chemiluminescence.

Specification

Product Description Goat polyclonal antibody raised against synthetic peptide of KLF16.

Immunogen A synthetic peptide corresponding to human KLF16.

Sequence C-PAPSPAPSPAPAGL

Host Goat

Theoretical MW (kDa) 25.4

Reactivity Human

Form Liquid

Purification Antigen affinity purification

Concentration 0.5 mg/mL

Quality Control Testing Antibody Reactive Against Synthetic Peptide.

Recommend Usage
ELISA (1:32000)
Western blot (0.3-1 ug/mL)
The optimal working dilution should be determined by the end user.

Storage Buffer	In Tris saline, pH 7.3 (0.5% BSA, 0.02% sodium azide)
Storage Instruction	Store at -20°C. Aliquot to avoid repeated freezing and thawing.
Note	This product contains sodium azide: a POISONOUS AND HAZARDOUS SUBSTANCE which should be handled by trained staff only.

Applications

- Western Blot (Tissue lysate)

KLF16 polyclonal antibody (Cat # PAB6182) (0.3 ug/mL) staining of human heart lysate (35 ug protein in RIPA buffer). Primary incubation was 1 hour. Detected by chemiluminescence.

- Enzyme-linked Immunoabsorbent Assay

Gene Info — KLF16

Entrez GeneID	83855
Protein Accession#	NP_114124.1
Gene Name	KLF16
Gene Alias	BTEB4, DRRF, NSLP2
Gene Description	Kruppel-like factor 16
Omim ID	606139
Gene Ontology	Hyperlink
Other Designations	BTE-binding protein 4 basic transcription element binding protein 4 dopamine receptor regulating factor

Publication Reference

- [Dopamine receptor regulating factor, DRRF: a zinc finger transcription factor.](#)

Hwang CK.

PNAS 2001 Jun; 98(13):7558.

Disease

- [Diabetes Mellitus](#)
- [Genetic Predisposition to Disease](#)