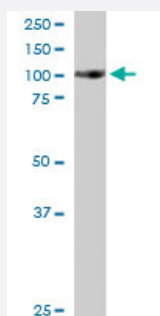


MAP4K1 polyclonal antibody

Catalog # PAB6178

Size 100 ug

Applications



Western Blot (Cell lysate)

MAP4K1 polyclonal antibody (Cat # PAB6178) staining (0.5 ug/mL) of Jurkat lysate (RIPA buffer, 35 ug total protein per lane). Primary incubated for 1 hour. Detected by western blot using chemiluminescence.

Specification

Product Description Goat polyclonal antibody raised against synthetic peptide of MAP4K1.

Immunogen A synthetic peptide corresponding to human MAP4K1.

Sequence DVVDPDIFNRDPR-C

Host Goat

Theoretical MW (kDa) 90.4, 91.3

Reactivity Human

Form Liquid

Purification Antigen affinity purification

Concentration 0.5 mg/mL

Quality Control Testing Antibody Reactive Against Synthetic Peptide.

Recommend Usage
 ELISA (1:32000)
 Western Blot (0.5-2 ug/mL)
 The optimal working dilution should be determined by the end user.

Storage Buffer	In Tris saline, pH 7.3 (0.5% BSA, 0.02% sodium azide)
Storage Instruction	Store at -20°C. Aliquot to avoid repeated freezing and thawing.
Note	This product contains sodium azide: a POISONOUS AND HAZARDOUS SUBSTANCE which should be handled by trained staff only.

Applications

- Western Blot (Cell lysate)

MAP4K1 polyclonal antibody (Cat # PAB6178) staining (0.5 ug/mL) of Jurkat lysate (RIPA buffer, 35 ug total protein per lane). Primary incubated for 1 hour. Detected by western blot using chemiluminescence.

- Enzyme-linked Immunoabsorbent Assay

Gene Info — MAP4K1

Entrez GeneID	11184
Protein Accession#	NP_009112
Gene Name	MAP4K1
Gene Alias	HPK1
Gene Description	mitogen-activated protein kinase kinase kinase kinase 1
Omim ID	601983
Gene Ontology	Hyperlink
Other Designations	hematopoietic progenitor kinase 1

Pathway

- [MAPK signaling pathway](#)