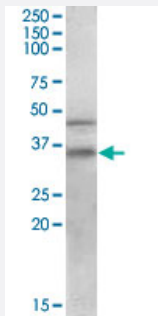


GULP1 polyclonal antibody

Catalog # PAB6174

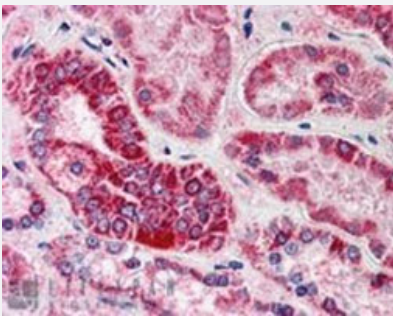
Size 100 ug

Applications



Western Blot (Tissue lysate)

GULP1 polyclonal antibody (Cat # PAB6174) staining (0.2 ug/mL) of human placenta lysate (RIPA buffer, 30 ug total protein per lane). Primary incubated for 1 hour. Detected by western blot using chemiluminescence.



Immunohistochemistry (Formalin/PFA-fixed paraffin-embedded sections)

GULP1 polyclonal antibody (Cat # PAB6174, 5 ug/mL) staining of paraffin embedded human kidney. Steamed antigen retrieval with citrate buffer pH 6, AP-staining.

Specification

Product Description	Goat polyclonal antibody raised against synthetic peptide of GULP1.
Immunogen	A synthetic peptide corresponding to human GULP1.
Sequence	EGTVFCLDPLDSRC
Host	Goat
Theoretical MW (kDa)	34.5
Reactivity	Human
Form	Liquid

Purification	Antigen affinity purification
Concentration	0.5 mg/mL
Quality Control Testing	Antibody Reactive Against Synthetic Peptide.
Recommend Usage	ELISA (1:64000) Western blot (0.2-0.6 ug/mL) Immunohistochemistry (Formalin/PFA-fixed paraffin-embedded sections) (5-10 ug/mL) The optimal working dilution should be determined by the end user.
Storage Buffer	In Tris saline, pH 7.3 (0.5% BSA, 0.02% sodium azide)
Storage Instruction	Store at -20°C. Aliquot to avoid repeated freezing and thawing.
Note	This product contains sodium azide: a POISONOUS AND HAZARDOUS SUBSTANCE which should be handled by trained staff only.

Applications

- Western Blot (Tissue lysate)

GULP1 polyclonal antibody (Cat # PAB6174) staining (0.2 ug/mL) of human placenta lysate (RIPA buffer, 30 ug total protein per lane). Primary incubated for 1 hour. Detected by western blot using chemiluminescence.

- Immunohistochemistry (Formalin/PFA-fixed paraffin-embedded sections)

GULP1 polyclonal antibody (Cat # PAB6174, 5 ug/mL) staining of paraffin embedded human kidney. Steamed antigen retrieval with citrate buffer pH 6, AP-staining.

- Enzyme-linked Immunoabsorbent Assay

Gene Info — GULP1

Entrez GeneID	51454
Protein Accession#	NP_057399.1
Gene Name	GULP1
Gene Alias	CED-6, CED6, FLJ31156, GULP
Gene Description	GULP, engulfment adaptor PTB domain containing 1
Omim ID	608165

Gene Ontology[Hyperlink](#)**Gene Summary**

The prompt clearance of cells undergoing apoptosis is critical during embryonic development, normal tissue turnover, inflammation, and autoimmunity. CED6 is an evolutionarily conserved adaptor protein required for efficient engulfment of apoptotic cells by phagocytes.[supplied by OMIM]

Other Designations

PTB domain adaptor protein CED-6|engulfment adapter protein

Publication Reference

- [Interaction of CED-6/GULP, an adapter protein involved in engulfment of apoptotic cells with CED-1 and CD91/low density lipoprotein receptor-related protein \(LRP\).](#)

Su HP, Nakada-Tsukui K, Tosello-Tramont AC, Li Y, Bu G, Henson PM, Ravichandran KS.

The Journal of Biological Chemistry 2002 Apr; 277(14):11772.

Disease

- [Schizophrenia](#)