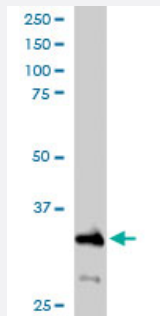


ARPC2 polyclonal antibody

Catalog # PAB6168

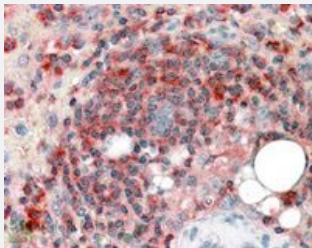
Size 100 ug

Applications



Western Blot (Cell lysate)

ARPC2 polyclonal antibody (Cat # PAB6168) staining (0.2 ug/mL) of HeLa lysate (RIPA buffer, 35 ug total protein per lane). Primary incubated for 1 hour. Detected by western blot using chemiluminescence.



Immunohistochemistry (Formalin/PFA-fixed paraffin-embedded sections)

ARPC2 polyclonal antibody (Cat # PAB6168) (3.8 ug/mL) staining of paraffin embedded human spleen. Steamed antigen retrieval with citrate buffer pH 6, AP-staining.

Specification

Product Description	Goat polyclonal antibody raised against synthetic peptide of ARPC2.
Immunogen	A synthetic peptide corresponding to human ARPC2.
Sequence	C-EMKTITGKTFSSR
Host	Goat
Theoretical MW (kDa)	34.3
Reactivity	Human

Specificity	This antibody is expected to recognize both reported isoforms, as represented by NP_005722 and NP_690601.
Form	Liquid
Purification	Antigen affinity purification
Concentration	0.5 mg/mL
Quality Control Testing	Antibody Reactive Against Synthetic Peptide.
Recommend Usage	ELISA (1:32000) Western blot (0.1-0.5 ug/mL) Immunohistochemistry (Formalin/PFA-fixed paraffin-embedded sections) (3-5 ug/mL) The optimal working dilution should be determined by the end user.
Storage Buffer	In Tris saline, pH 7.3 (0.5% BSA, 0.02% sodium azide)
Storage Instruction	Store at -20°C. Aliquot to avoid repeated freezing and thawing.
Note	This product contains sodium azide: a POISONOUS AND HAZARDOUS SUBSTANCE which should be handled by trained staff only.

Applications

- Western Blot (Cell lysate)

ARPC2 polyclonal antibody (Cat # PAB6168) staining (0.2 ug/mL) of HeLa lysate (RIPA buffer, 35 ug total protein per lane). Primary incubated for 1 hour. Detected by western blot using chemiluminescence.

- Immunohistochemistry (Formalin/PFA-fixed paraffin-embedded sections)

ARPC2 polyclonal antibody (Cat # PAB6168) (3.8 ug/mL) staining of paraffin embedded human spleen. Steamed antigen retrieval with citrate buffer pH 6, AP-staining.

- Enzyme-linked Immunoabsorbent Assay

Gene Info — ARPC2

Entrez GeneID	10109
Protein Accession#	NP_005722;NP_690601
Gene Name	ARPC2
Gene Alias	ARC34, PNAS-139, PRO2446, p34-Arc

Gene Description	actin related protein 2/3 complex, subunit 2, 34kDa
Omim ID	604224
Gene Ontology	Hyperlink
Gene Summary	This gene encodes one of seven subunits of the human Arp2/3 protein complex. The Arp2/3 protein complex has been implicated in the control of actin polymerization in cells and has been conserved through evolution. The exact role of the protein encoded by this gene, the p34 subunit, has yet to be determined. Two alternatively spliced variants have been characterized to date. Additional alternatively spliced variants have been described but their full length nature has not been determined. [provided by RefSeq]
Other Designations	ARP2/3 protein complex subunit 34 OTTHUMP00000164144 actin related protein 2/3 complex subunit 2 actin related protein 2/3 complex, subunit 2 (34 kD)

Publication Reference

- [Tumor-associated autoantibodies from mouse breast cancer models are found in serum of breast cancer patients.](#)

Sasha E Stanton, Ekram Gad, Erik Ramos, Lauren Corulli, James Annis, Jennifer Childs, Hiroyuki Katayama, Samir Hanash, Jeffrey Marks, Mary L Disis.

NPJ Breast Cancer 2021 May; 7(1):50.

Application: Cap Ab, ELISA, Human, Human serum

- [The human Arp2/3 complex is composed of evolutionarily conserved subunits and is localized to cellular regions of dynamic actin filament assembly.](#)

Welch MD, DePace AH, Verma S, Iwamatsu A, Mitchison TJ.

The Journal of Cell Biology 1997 Jul; 138(2):375.

Application: WB-Ce, Chicken, Human, Mouse, 3T3, HeLa cells, Fibroblast

Pathway

- [Fc gamma R-mediated phagocytosis](#)
- [Regulation of actin cytoskeleton](#)

Disease

- [Colitis](#)

- [Genetic Predisposition to Disease](#)