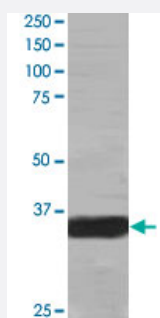


MORF4L2 polyclonal antibody

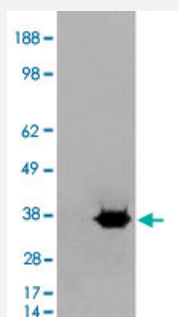
Catalog # PAB6152 Size 100 ug

Applications



Western Blot (Cell lysate)

MORF4L2 polyclonal antibody (Cat # PAB6152) staining (0.2 ug/mL) of A-431 lysate (RIPA buffer, 35 ug total protein per lane). Primary incubated for 1 hour. Detected by western blot using chemiluminescence.



Western Blot (Transfected lysate)

HEK293 overexpressing MORF4L2 and probed with MORF4L2 polyclonal antibody (Cat # PAB6152) (mock transfection in first lane), tested by Origene.

Specification

Product Description	Goat polyclonal antibody raised against synthetic peptide of MORF4L2.
Immunogen	A synthetic peptide corresponding to human MORF4L2.
Sequence	SSRKQGSQPRGQQS-C
Host	Goat
Theoretical MW (kDa)	32.3
Reactivity	Human
Form	Liquid

Purification	Antigen affinity purification
Concentration	0.5 mg/mL
Quality Control Testing	Antibody Reactive Against Synthetic Peptide.
Recommend Usage	ELISA (1:32000) Western Blot (0.5-1.5 ug/mL) The optimal working dilution should be determined by the end user.
Storage Buffer	In Tris saline, pH 7.3 (0.5% BSA, 0.02% sodium azide)
Storage Instruction	Store at -20°C. Aliquot to avoid repeated freezing and thawing.
Note	This product contains sodium azide: a POISONOUS AND HAZARDOUS SUBSTANCE which should be handled by trained staff only.

Applications

- Western Blot (Cell lysate)

MORF4L2 polyclonal antibody (Cat # PAB6152) staining (0.2 ug/mL) of A-431 lysate (RIPA buffer, 35 ug total protein per lane). Primary incubated for 1 hour. Detected by western blot using chemiluminescence.

- Western Blot (Transfected lysate)

HEK293 overexpressing MORF4L2 and probed with MORF4L2 polyclonal antibody (Cat # PAB6152) (mock transfection in first lane), tested by Origene.

- Enzyme-linked Immunoabsorbent Assay

Gene Info — MORF4L2

Entrez GeneID	9643
Protein Accession#	NP_0.36418.1
Gene Name	MORF4L2
Gene Alias	KIAA0026, MORFL2, MRGX
Gene Description	mortality factor 4 like 2
Omim ID	300409
Gene Ontology	Hyperlink

Other Designations

MORF-related gene X|MSL3-2 protein|OTTHUMP00000023755|OTTHUMP00000023756

Publication Reference

- [MRG Proteins Are Shared by Multiple Protein Complexes With Distinct Functions.](#)

Maëva Devoucoux, Céline Roques, Catherine Lachance, Anahita Lashgari, Charles Joly-Beauparlant, Karine Jacquet, Nader Alerasool, Alexandre Prudente, Mikko Taipale, Arnaud Droit, Jean-Philippe Lambert, Samer M I Hussein, Jacques Côté.

Molecular & Cellular proteomics: MCP 2022 Jul; 21(7):100253.

Application: WB-Tr, Human, K562, U2OS cells

- [Identification of a gene that reverses the immortal phenotype of a subset of cells and is a member of a novel family of transcription factor-like genes.](#)

Bertram MJ, Berube NG, Hang-Swanson X, Ran Q, Leung JK, Bryce S, Spurgers K, Bick RJ, Baldini A, Ning Y, Clark LJ, Parkinson EK, Barrett JC, Smith JR, Pereira-Smith OM.

Molecular and Cellular Biology 1999 Feb; 19(2):1479.