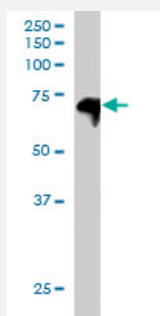


SWAP70 polyclonal antibody

Catalog # PAB6143

Size 100 ug

Applications



Western Blot (Cell lysate)

SWAP70 polyclonal antibody (Cat # PAB6143) staining (2 ug/mL) of Daudi lysate (RIPA buffer, 30 ug total protein per lane). Primary incubated for 12 hour. Detected by western blot using chemiluminescence.

Specification

Product Description	Goat polyclonal antibody raised against synthetic peptide of SWAP70.
Immunogen	A synthetic peptide corresponding to human SWAP70.
Sequence	C-EEREKNWKEKKTTE
Host	Goat
Theoretical MW (kDa)	69
Reactivity	Human
Form	Liquid
Purification	Antigen affinity purification
Concentration	0.5 mg/mL
Quality Control Testing	Antibody Reactive Against Synthetic Peptide.
Recommend Usage	ELISA (1:64000) Western Blot (1-3 ug/mL) The optimal working dilution should be determined by the end user.

Storage Buffer	In Tris saline, pH 7.3 (0.5% BSA, 0.02% sodium azide)
Storage Instruction	Store at -20°C. Aliquot to avoid repeated freezing and thawing.
Note	This product contains sodium azide: a POISONOUS AND HAZARDOUS SUBSTANCE which should be handled by trained staff only.

Applications

- Western Blot (Cell lysate)

SWAP70 polyclonal antibody (Cat # PAB6143) staining (2 ug/mL) of Daudi lysate (RIPA buffer, 30 ug total protein per lane). Primary incubated for 12 hour. Detected by western blot using chemiluminescence.

- Enzyme-linked Immunoabsorbent Assay

Gene Info — SWAP70

Entrez GeneID	23075
Protein Accession#	NP_055870.2
Gene Name	SWAP70
Gene Alias	FLJ39540, HSPC321, KIAA0640, SWAP-70
Gene Description	SWAP-70 protein
Omim ID	604762
Gene Ontology	Hyperlink
Other Designations	-

Publication Reference

- [Signaling protein SWAP-70 is required for efficient B cell homing to lymphoid organs.](#)

Pearce G, Angeli V, Randolph GJ, Junt T, von Andrian U, Schnittler HJ, Jessberger R.

Nature Immunology 2006 Aug; 7(8):827.