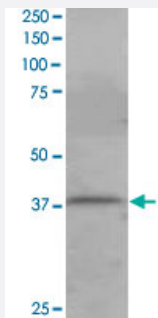


PSCDBP polyclonal antibody

Catalog # PAB6131

Size 100 ug

Applications



Western Blot (Cell lysate)

PSCDBP polyclonal antibody (Cat # PAB6131) staining (1 ug/mL) of Jurkat lysate (RIPA buffer, 35 ug total protein per lane). Primary incubated for 1 hour. Detected by western blot using chemiluminescence.

Specification

Product Description Goat polyclonal antibody raised against synthetic peptide of PSCDBP.

Immunogen A synthetic peptide corresponding to human PSCDBP.

Sequence SLQRLLQHSSNGN-C

Host Goat

Theoretical MW (kDa) 40

Reactivity Human

Form Liquid

Purification Antigen affinity purification

Concentration 0.5 mg/mL

Quality Control Testing Antibody Reactive Against Synthetic Peptide.

Recommend Usage
 ELISA (1:16000)
 Western Blot (0.5-2 ug/mL)
 The optimal working dilution should be determined by the end user.

Storage Buffer	In Tris saline, pH 7.3 (0.5% BSA, 0.02% sodium azide)
Storage Instruction	Store at -20°C. Aliquot to avoid repeated freezing and thawing.
Note	This product contains sodium azide: a POISONOUS AND HAZARDOUS SUBSTANCE which should be handled by trained staff only.

Applications

- Western Blot (Cell lysate)

PSCDBP polyclonal antibody (Cat # PAB6131) staining (1 ug/mL) of Jurkat lysate (RIPA buffer, 35 ug total protein per lane). Primary incubated for 1 hour. Detected by western blot using chemiluminescence.

- Enzyme-linked Immunoabsorbent Assay

Gene Info — CYTIP

Entrez GeneID	9595
Protein Accession#	NP_004279.3
Gene Name	CYTIP
Gene Alias	B3-1, CASP, CYBR, CYTHIP, HE, PSCDBP
Gene Description	cytohesin 1 interacting protein
Omim ID	604448
Gene Ontology	Hyperlink
Gene Summary	The protein encoded by this gene contains 2 leucine zipper domains and a putative C-terminal nuclear targeting signal, but does not have any hydrophobic regions. This protein is expressed weakly in resting NK and T cells. The encoded protein modulates the activation of ARF genes by CYTH1. This protein interacts with CYTH1 and SNX27 proteins and may act to sequester CYTH1 protein in the cytoplasm.[provided by RefSeq]
Other Designations	cytohesin binder and regulator cytohesin binding protein HE cytohesin-1 interacting protein pleckstrin homology, Sec7 and coiled-coil domains, binding protein pleckstrin homology, Sec7 and coiled/coil domains, binding protein

Publication Reference

- [Cybr, a cytokine-inducible protein that binds cytohesin-1 and regulates its activity.](#)

Tang P, Cheng TP, Agnello D, Wu CY, Hissong BD, Watford WT, Ahn HJ, Galon J, Moss J, Vaughan M, O'Shea JJ, Gadina M.
PNAS 2002 Mar; 99(5):2625.

Disease

- [Tobacco Use Disorder](#)