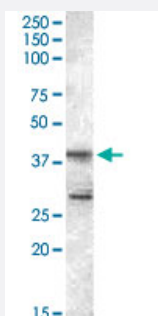


# SKAP2 polyclonal antibody

Catalog # PAB6127

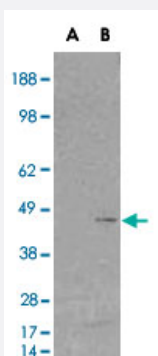
Size 100 ug

## Applications



### Western Blot (Cell lysate)

SKAP2 polyclonal antibody (Cat # PAB6127) staining (0.5 ug/mL) of Jurkat lysate (35 ug protein in RIPA buffer). Primary incubation was 1 hour. Detected by chemiluminescence.



### Western Blot (Transfected lysate)

HEK293 overexpressing SKAP2 (RC206119) and probed with EB05356 (mock transfection in first lane), tested by Origene.

## Specification

Product Description	Goat polyclonal antibody raised against synthetic peptide of SKAP2.
Immunogen	A synthetic peptide corresponding to human SKAP2.
Sequence	C-GLVPKAYIMEMYDI
Host	Goat
Theoretical MW (kDa)	41.2
Reactivity	Human

Form	Liquid
Purification	Antigen affinity purification
Concentration	0.5 mg/mL
Quality Control Testing	Antibody Reactive Against Synthetic Peptide.
Recommend Usage	ELISA (1:32000) Western Blot (0.5-2 ug/mL) The optimal working dilution should be determined by the end user.
Storage Buffer	In Tris saline, pH 7.3 (0.5% BSA, 0.02% sodium azide)
Storage Instruction	Store at -20°C. Aliquot to avoid repeated freezing and thawing.
Note	This product contains sodium azide: a POISONOUS AND HAZARDOUS SUBSTANCE which should be handled by trained staff only.

## Applications

- Western Blot (Cell lysate)

SKAP2 polyclonal antibody (Cat # PAB6127) staining (0.5 ug/mL) of Jurkat lysate (35 ug protein in RIPA buffer). Primary incubation was 1 hour. Detected by chemiluminescence.

- Western Blot (Transfected lysate)

HEK293 overexpressing SKAP2 (RC206119) and probed with EB05356 (mock transfection in first lane), tested by Origene.

- Enzyme-linked Immunoabsorbent Assay

## Gene Info — SKAP2

Entrez GeneID	<a href="#">8935</a>
Protein Accession#	<a href="#">NP_003921.2</a>
Gene Name	SKAP2
Gene Alias	MGC10411, MGC33304, PRAP, RA70, SAPS, SCAP2, SKAP-HOM, SKAP55R
Gene Description	src kinase associated phosphoprotein 2
Omim ID	<a href="#">605215</a>

## Gene Ontology

[Hyperlink](#)

## Gene Summary

The protein encoded by this gene belongs to the src family kinases. This protein is similar to the src kinase associated phosphoprotein 1. It is an adaptor protein that is thought to play an essential role in the src signaling pathway in various cells. It inhibits PTK2B/RAFTK activity and regulates alpha-synuclein phosphorylation. [provided by RefSeq]

## Other Designations

Fyn-associated phosphoprotein SKAP55 homologue|Pyk2/RAFTK-associated protein|src family associated phosphoprotein 2|src kinase-associated phosphoprotein of 55-related protein|src-associated adaptor protein

## Publication Reference

- [Identification and characterization of a novel Pyk2/related adhesion focal tyrosine kinase-associated protein that inhibits alpha-synuclein phosphorylation.](#)

Takahashi T, Yamashita H, Nagano Y, Nakamura T, Ohmori H, Avraham H, Avraham S, Yasuda M, Matsumoto M.

The Journal of Biological Chemistry 2003 Jul; 278(43):42225.

## Disease

- [Cardiovascular Diseases](#)
- [Diabetes Mellitus](#)
- [Edema](#)
- [Genetic Predisposition to Disease](#)