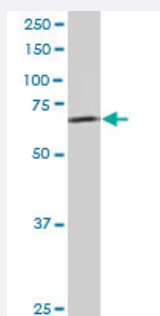


TBL1X/TBL1XR1 polyclonal antibody

Catalog # PAB6110

Size 100 ug

Applications



Western Blot (Tissue lysate)

The TBL1X/TBL1XR1 polyclonal antibody (Cat # PAB6110) staining (4 ug/mL) of human brain lysate (RIPA buffer, 35 ug total protein per lane). Primary incubated for 1 hour. Detected by western blot using chemiluminescence.

Specification

Product Description	Goat polyclonal antibody raised against synthetic peptide of TBL1X/TBL1XR1.
Immunogen	A synthetic peptide corresponding to human TBL1X, TBL1XR1.
Sequence	SASDGSVCVLDLRK
Host	Goat
Theoretical MW (kDa)	62.5, 57.0, 55.6
Reactivity	Human
Specificity	This antibody is also expected to recognize the human protein TBLR1 (NP_078941), which is very similar.
Form	Liquid
Purification	Antigen affinity purification
Concentration	0.5 mg/mL
Quality Control Testing	Antibody Reactive Against Synthetic Peptide.

Recommend Usage	ELISA (1:4000) Western blot (3-5 ug/mL) The optimal working dilution should be determined by the end user.
Storage Buffer	In Tris saline, pH 7.3 (0.5% BSA, 0.02% sodium azide)
Storage Instruction	Store at -20°C. Aliquot to avoid repeated freezing and thawing.
Note	This product contains sodium azide: a POISONOUS AND HAZARDOUS SUBSTANCE which should be handled by trained staff only.

Applications

- Western Blot (Tissue lysate)

The TBL1X/TBL1XR1 polyclonal antibody (Cat # PAB6110) staining (4 ug/mL) of human brain lysate (RIPA buffer, 35 ug total protein per lane). Primary incubated for 1 hour. Detected by western blot using chemiluminescence.

- Enzyme-linked Immunoabsorbent Assay

Gene Info — TBL1X

Entrez GeneID	6907
Protein Accession#	NP_005638.1 (Gene ID : 6907);NP_078941.2 (Gene ID : 79718)
Gene Name	TBL1X
Gene Alias	EBI, SMAP55, TBL1
Gene Description	transducin (beta)-like 1X-linked
Omim ID	300196
Gene Ontology	Hyperlink

Gene Summary

The protein encoded by this gene has sequence similarity with members of the WD40 repeat-containing protein family. The WD40 group is a large family of proteins, which appear to have a regulatory function. It is believed that the WD40 repeats mediate protein-protein interactions and members of the family are involved in signal transduction, RNA processing, gene regulation, vesicular trafficking, cytoskeletal assembly and may play a role in the control of cytotypic differentiation. This encoded protein is found as a subunit in corepressor SMRT (silencing mediator for retinoid and thyroid receptors) complex along with histone deacetylase 3 protein. This gene is located adjacent to the ocular albinism gene and it is thought to be involved in the pathogenesis of the ocular albinism with late-onset sensorineural deafness phenotype. Four transcript variants encoding two different isoforms have been found for this gene. This gene is highly similar to the Y chromosome TBL1Y gene. [provided by RefSeq]

Other Designations

F-box-like/WD repeat-containing protein TBL1X|OTTHUMP00000022880|transducin beta-like 1X

Gene Info — TBL1XR1

Entrez GeneID

[79718](#)

Protein Accession#

[NP_005638.1 \(Gene ID : 6907\);NP_078941.2 \(Gene ID : 79718\)](#)

Gene Name

TBL1XR1

Gene Alias

C21, DC42, FLJ12894, IRA1, TBLR1

Gene Description

transducin (beta)-like 1 X-linked receptor 1

Gene Ontology

[Hyperlink](#)

Gene Summary

The protein encoded by this gene has sequence similarity with members of the WD40 repeat-containing protein family. The WD40 group is a large family of proteins, which appear to have a regulatory function. It is believed that the WD40 repeats mediate protein-protein interactions and members of the family are involved in signal transduction, RNA processing, gene regulation, vesicular trafficking, cytoskeletal assembly and may play a role in the control of cytotypic differentiation. [provided by RefSeq]

Other Designations

TBL1-related protein 1|nuclear receptor co-repressor/HDAC3 complex subunit

Publication Reference

- [SMRT derepression by the IκappaB kinase alpha: a prerequisite to NF-kappaB transcription and survival.](#)

Hoberg JE, Yeung F, Mayo MW.

Molecular Cell 2004 Oct; 16(2):245.

Application: WB, Human, DU 145, HEK 293T cells

Pathway

- [Wnt signaling pathway](#)
- [Wnt signaling pathway](#)

Disease

- [Tobacco Use Disorder](#)