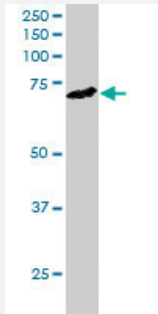


# ELMO3 polyclonal antibody

Catalog # PAB6101      Size 100 ug

## Applications



### Western Blot (Tissue lysate)

ELMO3 polyclonal antibody (Cat # PAB6101) staining (2 ug/mL) of human brain lysate (RIPA buffer, 35 ug total protein per lane). Primary incubated for 1 hour. Detected by western blot using chemiluminescence.

## Specification

**Product Description** Goat polyclonal antibody raised against synthetic peptide of ELMO3.

**Immunogen** A synthetic peptide corresponding to human ELMO3.

**Sequence** TNFNFCYDCSIAEP

**Host** Goat

**Theoretical MW (kDa)** 70

**Reactivity** Human

**Form** Liquid

**Purification** Antigen affinity purification

**Concentration** 0.5 mg/mL

**Quality Control Testing** Antibody Reactive Against Synthetic Peptide.

**Recommend Usage**  
 ELISA (1:16000)  
 Western blot (1-3 ug/mL)  
 The optimal working dilution should be determined by the end user.

<b>Storage Buffer</b>	In Tris saline, pH 7.3 (0.5% BSA, 0.02% sodium azide)
<b>Storage Instruction</b>	Store at -20°C. Aliquot to avoid repeated freezing and thawing.
<b>Note</b>	This product contains sodium azide: a POISONOUS AND HAZARDOUS SUBSTANCE which should be handled by trained staff only.

## Applications

- Western Blot (Tissue lysate)

ELMO3 polyclonal antibody (Cat # PAB6101) staining (2 ug/mL) of human brain lysate (RIPA buffer, 35 ug total protein per lane). Primary incubated for 1 hour. Detected by western blot using chemiluminescence.

- Enzyme-linked Immunoabsorbent Assay

## Gene Info — ELMO3

<b>Entrez GeneID</b>	<a href="#">79767</a>
<b>Protein Accession#</b>	<a href="#">NP_078988.2</a>
<b>Gene Name</b>	ELMO3
<b>Gene Alias</b>	CED-12, CED12, ELMO-3, FLJ13824
<b>Gene Description</b>	engulfment and cell motility 3
<b>Omim ID</b>	<a href="#">606422</a>
<b>Gene Ontology</b>	<a href="#">Hyperlink</a>
<b>Gene Summary</b>	The protein encoded by this gene is similar to a <i>C. elegans</i> protein that functions in phagocytosis of apoptotic cells and in cell migration. Other members of this small family of engulfment and cell motility (ELMO) proteins have been shown to interact with the dedicator of cyto-kinesis 1 protein to promote phagocytosis and effect cell shape changes. [provided by RefSeq]
<b>Other Designations</b>	ced-12 homolog 3

## Publication Reference

- [CED-12/ELMO, a novel member of the Crkl/Dock180/Rac pathway, is required for phagocytosis and cell migration.](#)

Gumienny TL, Brugnera E, Tosello-Tramont AC, Kinchen JM, Haney LB, Nishiwaki K, Walk SF, Nemergut ME, Macara IG, Francis R, Schedl T, Qin Y, Van Aelst L, Hengartner MO, Ravichandran KS.

Cell 2001 Oct; 107(1):27.

Application: WB-Tr, Mouse, LR73 cells