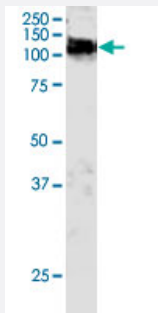


CBL polyclonal antibody

Catalog # PAB6097

Size 100 ug

Applications



Western Blot (Cell lysate)

CBL polyclonal antibody (Cat # PAB6097) staining (2 ug/mL) of NIH/3T3 lysate (RIPA buffer, 35 ug total protein per lane). Primary incubated for 1 hour. Detected by western blot using chemiluminescence.

Specification

Product Description Goat polyclonal antibody raised against synthetic peptide of CBL.

Immunogen A synthetic peptide corresponding to C-terminus of human CBL.

Sequence C-REFVSISSPAHVAT

Host Goat

Theoretical MW (kDa) 120

Reactivity Mouse

Form Liquid

Purification Antigen affinity purification

Concentration 0.5 mg/mL

Recommend Usage ELISA (1:32000)
Western blot (1-3 ug/mL)
The optimal working dilution should be determined by the end user.

Storage Buffer In Tris saline, pH 7.3 (0.5% BSA, 0.02% sodium azide)

Storage Instruction

Store at -20°C.
Aliquot to avoid repeated freezing and thawing.

Note

This product contains sodium azide: a POISONOUS AND HAZARDOUS SUBSTANCE which should be handled by trained staff only.

Applications

- Western Blot (Cell lysate)

CBL polyclonal antibody (Cat # PAB6097) staining (2 ug/mL) of NIH/3T3 lysate (RIPA buffer, 35 ug total protein per lane). Primary incubated for 1 hour. Detected by western blot using chemiluminescence.

- Enzyme-linked Immunoabsorbent Assay

Gene Info — CBL

Entrez GeneID[867](#)**Protein Accession#**[NP_005179.2](#)**Gene Name**

CBL

Gene Alias

C-CBL, CBL2, RNF55

Gene Description

Cas-Br-M (murine) ecotropic retroviral transforming sequence

Omim ID[165360](#)**Gene Ontology**[Hyperlink](#)**Gene Summary**

The cbl oncogene was first identified as part of a transforming retrovirus which induces mouse pre-B and pro-B cell lymphomas. As an adaptor protein for receptor protein-tyrosine kinases, it positively regulates receptor protein-tyrosine kinase ubiquitination in a manner dependent upon its variant SH2 and RING finger domains. Ubiquitination of receptor protein-tyrosine kinases terminates signaling by marking active receptors for degradation. [provided by RefSeq]

Other Designations

oncogene CBL2

Publication Reference

- [v-cbl, an oncogene from a dual-recombinant murine retrovirus that induces early B-lineage lymphomas.](#)

Langdon WY, Hartley JW, Klinken SP, Ruscetti SK, Morse HC 3rd.

PNAS 1989 Feb; 86(4):1168.

Pathway

- [Chronic myeloid leukemia](#)
- [Endocytosis](#)
- [ErbB signaling pathway](#)
- [Insulin signaling pathway](#)
- [Jak-STAT signaling pathway](#)
- [Pathways in cancer](#)
- [T cell receptor signaling pathway](#)
- [Ubiquitin mediated proteolysis](#)

Disease

- [Diabetes Mellitus](#)
- [Disease Progression](#)
- [Genetic Predisposition to Disease](#)
- [Leukemia](#)
- [Tobacco Use Disorder](#)