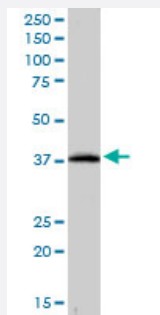


CRKL polyclonal antibody

Catalog # PAB6084

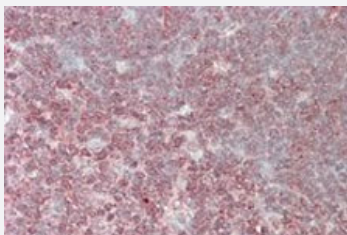
Size 100 ug

Applications



Western Blot (Cell lysate)

CRKL polyclonal antibody (Cat # PAB6084) staining (0.01 ug/mL) of K-562 lysate (35 ug protein in RIPA buffer). Primary incubation was 1 hour. Detected by chemiluminescence.



Immunohistochemistry (Formalin/PFA-fixed paraffin-embedded sections)

CRKL polyclonal antibody (Cat # PAB6084) (3.8 ug/mL) staining of paraffin embedded human thymus. Steamed antigen retrieval with citrate buffer pH 6, AP-staining.

Specification

Product Description	Goat polyclonal antibody raised against synthetic peptide of CRKL.
Immunogen	A synthetic peptide corresponding to C terminus of human CRKL.
Sequence	C-KIFDPQNPDENE
Host	Goat
Theoretical MW (kDa)	33.8
Reactivity	Human, Mouse, Rat
Form	Liquid

Purification	Antigen affinity purification
Concentration	0.5 mg/mL
Recommend Usage	ELISA (1:16000) Western Blot (0.01-0.03 ug/mL) Immunohistochemistry (Formalin/PFA-fixed paraffin-embedded sections) (2.5-3.8 ug/mL) The optimal working dilution should be determined by the end user.
Storage Buffer	In Tris saline, pH 7.3 (0.5% BSA, 0.02% sodium azide)
Storage Instruction	Store at -20°C. Aliquot to avoid repeated freezing and thawing.
Note	This product contains sodium azide: a POISONOUS AND HAZARDOUS SUBSTANCE which should be handled by trained staff only.

Applications

- Western Blot (Cell lysate)

CRKL polyclonal antibody (Cat # PAB6084) staining (0.01 ug/mL) of K-562 lysate (35 ug protein in RIPA buffer). Primary incubation was 1 hour. Detected by chemiluminescence.

- Immunohistochemistry (Formalin/PFA-fixed paraffin-embedded sections)

CRKL polyclonal antibody (Cat # PAB6084) (3.8 ug/mL) staining of paraffin embedded human thymus. Steamed antigen retrieval with citrate buffer pH 6, AP-staining.

- Enzyme-linked Immunoabsorbent Assay

Gene Info — CRKL

Entrez GeneID	1399
Protein Accession#	NP_005198
Gene Name	CRKL
Gene Alias	-
Gene Description	v-crk sarcoma virus CT10 oncogene homolog (avian)-like
Omim ID	602007
Gene Ontology	Hyperlink

Gene Summary

This gene encodes a protein kinase containing SH2 and SH3 (src homology) domains which has been shown to activate the RAS and JUN kinase signaling pathways and transform fibroblasts in a RAS-dependent fashion. It is a substrate of the BCR-ABL tyrosine kinase, plays a role in fibroblast transformation by BCR-ABL, and may be oncogenic

Other Designations

v-crk avian sarcoma virus CT10 oncogene homolog-like

Publication Reference

- [Active \(p\)CrkL is overexpressed in human malignancies: potential role as a surrogate parameter for therapeutic tyrosine kinase inhibition.](#)

Singer CF, Hudelist G, Lamm W, Mueller R, Handl C, Kubista E, Czerwenka K.

Oncology Reports 2006 Feb; 15(2):353.

Application: WB-Ce, Human, K-562 cells

Pathway

- [Chemokine signaling pathway](#)
- [Chronic myeloid leukemia](#)
- [ErbB signaling pathway](#)
- [Fc gamma R-mediated phagocytosis](#)
- [Focal adhesion](#)
- [Insulin signaling pathway](#)
- [MAPK signaling pathway](#)
- [Neurotrophin signaling pathway](#)
- [Pathways in cancer](#)
- [Regulation of actin cytoskeleton](#)
- [Renal cell carcinoma](#)

Disease

- [Cardiovascular Diseases](#)

- [Diabetes Mellitus](#)
- [Edema](#)