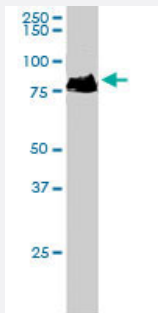


# CTTN polyclonal antibody

Catalog # PAB6083      Size 100 ug

## Applications



### Western Blot (Cell lysate)

CTTN polyclonal antibody (Cat # PAB6083) staining (0.5 ug/mL) of A-431 lysate (RIPA buffer, 35 ug total protein per lane). Primary incubated for 1 hour. Detected by western blot using chemiluminescence.

## Specification

**Product Description** Goat polyclonal antibody raised against synthetic peptide of CTTN.

**Immunogen** A synthetic peptide corresponding to human CTTN.

**Sequence** WKASAGHAVSIA-C

**Host** Goat

**Theoretical MW (kDa)** 61.6, 57.5

**Reactivity** Mouse

**Form** Liquid

**Purification** Antigen affinity purification

**Concentration** 0.5 mg/mL

**Quality Control Testing** Antibody Reactive Against Synthetic Peptide.

**Recommend Usage**  
 ELISA (1:32000)  
 Western blot (0.01-0.03 ug/mL)  
 The optimal working dilution should be determined by the end user.

Storage Buffer	In Tris saline, pH 7.3 (0.5% BSA, 0.02% sodium azide)
Storage Instruction	Store at -20°C. Aliquot to avoid repeated freezing and thawing.
Note	This product contains sodium azide: a POISONOUS AND HAZARDOUS SUBSTANCE which should be handled by trained staff only.

## Applications

- Western Blot (Cell lysate)

CTTN polyclonal antibody (Cat # PAB6083) staining (0.5 ug/mL) of A-431 lysate (RIPA buffer, 35 ug total protein per lane). Primary incubated for 1 hour. Detected by western blot using chemiluminescence.

- Enzyme-linked Immunoabsorbent Assay

## Gene Info — CTTN

Entrez GeneID	<a href="#">2017</a>
Protein Accession#	<a href="#">NP_005222</a>
Gene Name	CTTN
Gene Alias	EMS1, FLJ34459
Gene Description	cortactin
Omim ID	<a href="#">164765</a>
Gene Ontology	<a href="#">Hyperlink</a>

Gene Summary	This gene is overexpressed in breast cancer and squamous cell carcinomas of the head and neck. The encoded protein is localized in the cytoplasm and in areas of the cell-substratum contacts. This gene has two roles: (1) regulating the interactions between components of adherens-type junctions and (2) organizing the cytoskeleton and cell adhesion structures of epithelia and carcinoma cells. During apoptosis, the encoded protein is degraded in a caspase-dependent manner. The aberrant regulation of this gene contributes to tumor cell invasion and metastasis. Two splice variants that encode different isoforms have been identified for this gene. [provided by RefSeq]
Other Designations	1110020L01Rik ems1 sequence (mammary tumor and squamous cell carcinoma-associated (p80/85 src substrate)) oncogene EMS1

## Publication Reference

- [Identification and cloning of two overexpressed genes, U21B31/PRAD1 and EMS1, within the amplified chromosome 11q13 region in human carcinomas.](#)

Schuuring E, Verhoeven E, Mooi WJ, Michalides RJ.

Oncogene 1992 Feb; 7(2):355.

## Pathway

- [Pathogenic Escherichia coli infection - EHEC](#)
- [Tight junction](#)

## Disease

- [Asthma](#)
- [Genetic Predisposition to Disease](#)