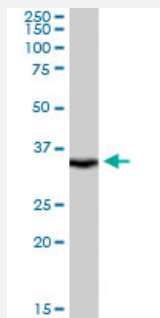


LASP1 polyclonal antibody

Catalog # PAB6082 Size 100 ug

Applications



Western Blot (Tissue lysate)

LASP1 polyclonal antibody (Cat # PAB6082) staining (0.1 ug/mL) of human brain (cerebellum) extracts (RIPA buffer, 35 ug total protein per lane). Primary incubated for 1 hour. Detected by western blot using chemiluminescence.

Specification

Product Description	Goat polyclonal antibody raised against synthetic peptide of LASP1.
Immunogen	A synthetic peptide corresponding to human LASP1.
Sequence	NPNCARCGKIVYP
Host	Goat
Theoretical MW (kDa)	29.7
Reactivity	Human
Form	Liquid
Purification	Antigen affinity purification
Concentration	0.5 mg/mL
Quality Control Testing	Antibody Reactive Against Synthetic Peptide.
Recommend Usage	ELISA (1:128000) Western Blot (0.1-0.3 ug/mL) The optimal working dilution should be determined by the end user.

Storage Buffer	In Tris saline, pH 7.3 (0.5% BSA, 0.02% sodium azide)
Storage Instruction	Store at -20°C. Aliquot to avoid repeated freezing and thawing.
Note	This product contains sodium azide: a POISONOUS AND HAZARDOUS SUBSTANCE which should be handled by trained staff only.

Applications

- Western Blot (Tissue lysate)

LASP1 polyclonal antibody (Cat # PAB6082) staining (0.1 ug/mL) of human brain (cerebellum) extracts (RIPA buffer, 35 ug total protein per lane). Primary incubated for 1 hour. Detected by western blot using chemiluminescence.

- Enzyme-linked Immunoabsorbent Assay

Gene Info — LASP1

Entrez GeneID	3927
Protein Accession#	NP_006139.1
Gene Name	LASP1
Gene Alias	Lasp-1, MLN50
Gene Description	LIM and SH3 protein 1
Omim ID	602920
Gene Ontology	Hyperlink
Gene Summary	This gene encodes a member of a LIM protein subfamily characterized by a LIM motif and a domain of Src homology region 3. The encoded protein functions as an actin-binding protein and possibly in cytoskeletal organization. [provided by RefSeq]
Other Designations	-

Publication Reference

- [Organelle proteomics of rat synaptic proteins: correlation-profiling by isotope-coded affinity tagging in conjunction with liquid chromatography-tandem mass spectrometry to reveal post-synaptic density specific proteins.](#)

Li K, Hornshaw MP, van Minnen J, Smalla KH, Gundelfinger ED, Smit AB.

Journal of Proteome Research 2005 May; 4(3):725.

Application: IEM, Rat, Rat brains

Disease

- [Autistic Disorder](#)
- [Genetic Predisposition to Disease](#)
- [Tobacco Use Disorder](#)