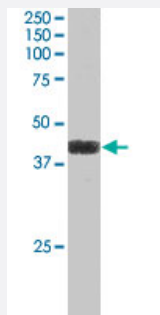


# ATF4 polyclonal antibody

Catalog # PAB6080      Size 100 ug

## Applications



### Western Blot (Cell lysate)

ATF4 polyclonal antibody (Cat # PAB6080) staining (1 ug/mL) of Raji lysate (RIPA buffer, 35 ug total protein per lane). Primary incubated for 1 hour. Detected by western blot using chemiluminescence.

## Specification

<b>Product Description</b>	Goat polyclonal antibody raised against synthetic peptide of ATF4.
<b>Immunogen</b>	A synthetic peptide corresponding to C-terminus of human ATF4.
<b>Sequence</b>	C-EEVRKARGKKRVP
<b>Host</b>	Goat
<b>Theoretical MW (kDa)</b>	38.6
<b>Reactivity</b>	Human, Mouse
<b>Form</b>	Liquid
<b>Purification</b>	Antigen affinity purification
<b>Concentration</b>	0.5 mg/mL
<b>Recommend Usage</b>	ELISA (1:1000) Western blot (1-3 ug/mL) The optimal working dilution should be determined by the end user.
<b>Storage Buffer</b>	In Tris saline, pH 7.3 (0.5% BSA, 0.02% sodium azide)

**Storage Instruction**

Store at -20°C.  
Aliquot to avoid repeated freezing and thawing.

**Note**

This product contains sodium azide: a POISONOUS AND HAZARDOUS SUBSTANCE which should be handled by trained staff only.

## Applications

- Western Blot (Cell lysate)

ATF4 polyclonal antibody (Cat # PAB6080) staining (1 ug/mL) of Raji lysate (RIPA buffer, 35 ug total protein per lane). Primary incubated for 1 hour. Detected by western blot using chemiluminescence.

- Enzyme-linked Immunoabsorbent Assay

## Gene Info — ATF4

**Entrez GeneID**[468](#)**Protein Accession#**[NP\\_001666](#)**Gene Name**

ATF4

**Gene Alias**

CREB-2, CREB2, TAXREB67, TXREB

**Gene Description**

activating transcription factor 4 (tax-responsive enhancer element B67)

**Omim ID**[604064](#)**Gene Ontology**[Hyperlink](#)**Gene Summary**

This gene encodes a transcription factor that was originally identified as a widely expressed mammalian DNA binding protein that could bind a tax-responsive enhancer element in the LTR of HTLV-1. The encoded protein was also isolated and characterized as the cAMP-response element binding protein 2 (CREB-2). The protein encoded by this gene belongs to a family of DNA-binding proteins that includes the AP-1 family of transcription factors, cAMP-response element binding proteins (CREBs) and CREB-like proteins. These transcription factors share a leucine zipper region that is involved in protein-protein interactions, located C-terminal to a stretch of basic amino acids that functions as a DNA binding domain. Two alternative transcripts encoding the same protein have been described. Two pseudogenes are located on the X chromosome at q28 in a region containing a large inverted duplication. [provided by RefSeq]

**Other Designations**

activating transcription factor 4|cAMP response element-binding protein 2

## Publication Reference

- [Isolation of cDNAs for DNA-binding proteins which specifically bind to a tax-responsive enhancer element in the long terminal repeat of human T-cell leukemia virus type I.](#)

Tsujimoto A, Nyunoya H, Morita T, Sato T, Shimotohno K.

Journal of Virology 1991 Mar; 65(3):1420.

Application: WB-Ce, WB-Re, Human, Jurkat cells, Recombinant proteins

## Pathway

- [GnRH signaling pathway](#)
- [Long-term potentiation](#)
- [MAPK signaling pathway](#)
- [Neurotrophin signaling pathway](#)
- [Prostate cancer](#)

## Disease

- [Bipolar Disorder](#)
- [Genetic Predisposition to Disease](#)
- [Mental Disorders](#)
- [Neuropsychological Tests](#)
- [Schizophrenia](#)