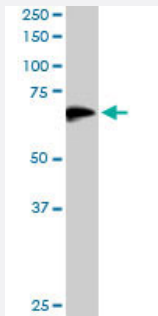


DOK3 polyclonal antibody

Catalog # PAB6065 Size 100 ug

Applications



Western Blot (Cell lysate)

DOK3 polyclonal antibody (Cat # PAB6065) staining (1 ug/mL) of human PBMCs lysate (RIPA buffer, 35 ug total protein per lane). Primary incubated for 1 hour. Detected by western blot using chemiluminescence.

Specification

Product Description Goat polyclonal antibody raised against synthetic peptide of DOK3.

Immunogen A synthetic peptide corresponding to human DOK3.

Sequence TRERRKGPAPCDRP

Host Goat

Theoretical MW (kDa) 53.3

Reactivity Human

Form Liquid

Purification Antigen affinity purification

Concentration 0.5 mg/mL

Quality Control Testing Antibody Reactive Against Synthetic Peptide.

Recommend Usage
ELISA (1:32000)
Western Blot (1-3 ug/mL)
The optimal working dilution should be determined by the end user.

Storage Buffer	In Tris saline, pH 7.3 (0.5% BSA, 0.02% sodium azide)
Storage Instruction	Store at -20°C. Aliquot to avoid repeated freezing and thawing.
Note	This product contains sodium azide: a POISONOUS AND HAZARDOUS SUBSTANCE which should be handled by trained staff only.

Applications

- Western Blot (Cell lysate)

DOK3 polyclonal antibody (Cat # PAB6065) staining (1 ug/mL) of human PBMCs lysate (RIPA buffer, 35 ug total protein per lane). Primary incubated for 1 hour. Detected by western blot using chemiluminescence.

- Enzyme-linked Immunoabsorbent Assay

Gene Info — DOK3

Entrez GeneID	79930
Protein Accession#	NP_079148.1
Gene Name	DOK3
Gene Alias	DOKL, FLJ22570, FLJ39939
Gene Description	docking protein 3
Omim ID	611435
Gene Ontology	Hyperlink
Other Designations	Dok-like protein

Publication Reference

- [Dok-3, a novel adapter molecule involved in the negative regulation of immunoreceptor signaling.](#)

Lemay S, Davidson D, Latour S, Veillette A.

Molecular and Cellular Biology 2000 Apr; 20(8):2743.

Application: IP, WB-Tr, Human, Monkey, A20 B-cells, COS-1 cells