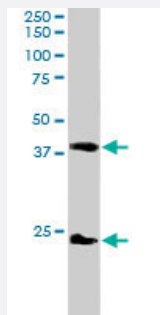


# SET polyclonal antibody

Catalog # PAB6048

Size 100 ug

## Applications



### Western Blot (Tissue lysate)

SET polyclonal antibody (Cat # PAB6048) staining (2 ug/mL) of human kidney extracts (RIPA buffer, 35 ug total protein per lane). Primary incubated for 1 hour. Detected by western blot using chemiluminescence.

## Specification

<b>Product Description</b>	Goat polyclonal antibody raised against synthetic peptide of SET.
<b>Immunogen</b>	A synthetic peptide corresponding to human SET.
<b>Sequence</b>	SAPAAKVSKKELNS-C
<b>Host</b>	Goat
<b>Theoretical MW (kDa)</b>	32.1
<b>Reactivity</b>	Human
<b>Specificity</b>	The peptide sequence used (from AAC50460.1) differs by one residue from the RefSeq entry (NP_03002.1) and the three other Genbank protein sequences referenced in the Locuslink entry. It is not known whether this difference is due to a sequencing error or polymorphism but this antibody is expected to recognize both sequences.
<b>Form</b>	Liquid
<b>Purification</b>	Antigen affinity purification
<b>Concentration</b>	0.5 mg/mL

Quality Control Testing	Antibody Reactive Against Synthetic Peptide.
Recommend Usage	ELISA (1:1000) Western blot (1-3 ug/mL) The optimal working dilution should be determined by the end user.
Storage Buffer	In Tris saline, pH 7.3 (0.5% BSA, 0.02% sodium azide)
Storage Instruction	Store at -20°C. Aliquot to avoid repeated freezing and thawing.
Note	This product contains sodium azide: a POISONOUS AND HAZARDOUS SUBSTANCE which should be handled by trained staff only.

## Applications

- Western Blot (Tissue lysate)

SET polyclonal antibody (Cat # PAB6048) staining (2 ug/mL) of human kidney extracts (RIPA buffer, 35 ug total protein per lane). Primary incubated for 1 hour. Detected by western blot using chemiluminescence.

- Enzyme-linked Immunoabsorbent Assay

## Gene Info — SET

Entrez GeneID	<a href="#">6418</a>
Protein Accession#	<a href="#">AAC50460.1</a>
Gene Name	SET
Gene Alias	2PP2A, I2PP2A, IGAAD, IPP2A2, PHAPII, TAF-I, TAF-IBETA
Gene Description	SET nuclear oncogene
Omim ID	<a href="#">600960</a>
Gene Ontology	<a href="#">Hyperlink</a>
Gene Summary	chromatin remodelling factor inhibitor of granzyme A-activated DNase inhibitor-2 of protein phosphatase-2A protein phosphatase ty
Other Designations	HLA-DR-associated protein II OTTHUMP00000022286 SET translocation (myeloid leukemia-associated) Template-Activating Factor-I, chromatin remodelling factor inhibitor of granzyme A-activated DNase inhibitor-2 of protein phosphatase-2A protein phosphatase ty

## Publication Reference

- [15-deoxy-delta12,14-prostaglandin J2-mediated ERK signaling inhibits gram-negative bacteria-induced RelA phosphorylation and interleukin-6 gene expression in intestinal epithelial cells through modulation of protein phosphatase 2A activity.](#)

Ruiz PA, Kim SC, Sartor RB, Haller D.

The Journal of Biological Chemistry 2004 Jun; 279(34):36103.

## Disease

- [Cleft Lip](#)
- [Cleft Palate](#)