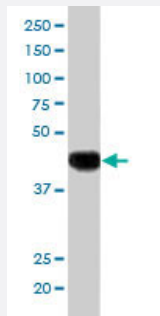


SLC16A7 polyclonal antibody

Catalog # PAB6044 Size 100 ug

Applications



Western Blot (Cell lysate)

SLC16A7 polyclonal antibody (Cat # PAB6044) staining (1 ug/mL) of A-549 lysate (35 ug protein in RIPA buffer). Primary incubation was 1 hour. Detected by chemiluminescence.

Specification

Product Description	Goat polyclonal antibody raised against synthetic peptide of SLC16A7.
Immunogen	A synthetic peptide corresponding to human SLC16A7.
Sequence	C-SNAQSVTSERETNI
Host	Goat
Theoretical MW (kDa)	52.2
Reactivity	Human
Form	Liquid
Purification	Antigen affinity purification
Concentration	0.5 mg/mL
Quality Control Testing	Antibody Reactive Against Synthetic Peptide.
Recommend Usage	ELISA (1:128000) Western Blot (1-3 ug/mL) The optimal working dilution should be determined by the end user.

Storage Buffer	In Tris saline, pH 7.3 (0.5% BSA, 0.02% sodium azide)
Storage Instruction	Store at -20°C. Aliquot to avoid repeated freezing and thawing.
Note	This product contains sodium azide: a POISONOUS AND HAZARDOUS SUBSTANCE which should be handled by trained staff only.

Applications

- Western Blot (Cell lysate)

SLC16A7 polyclonal antibody (Cat # PAB6044) staining (1 ug/mL) of A-549 lysate (35 ug protein in RIPA buffer). Primary incubation was 1 hour. Detected by chemiluminescence.

- Enzyme-linked Immunoabsorbent Assay

Gene Info — SLC16A7

Entrez GeneID	9194
Protein Accession#	NP_004722
Gene Name	SLC16A7
Gene Alias	MCT2
Gene Description	solute carrier family 16, member 7 (monocarboxylic acid transporter 2)
Omim ID	603654
Gene Ontology	Hyperlink
Gene Summary	O
Other Designations	monocarboxylate transporter 2 solute carrier family 16 (monocarboxylic acid transporters), member 7 solute carrier family 16, member 7

Publication Reference

- [Human monocarboxylate transporter 2 \(MCT2\) is a high affinity pyruvate transporter.](#)

Lin RY, Vera JC, Chaganti RS, Golde DW.

The Journal of Biological Chemistry 1998 Oct; 273(44):28959.

Disease

- [Tobacco Use Disorder](#)