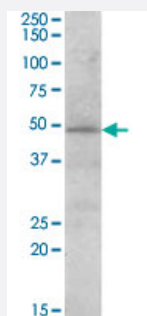


STAP2 polyclonal antibody

Catalog # PAB6042

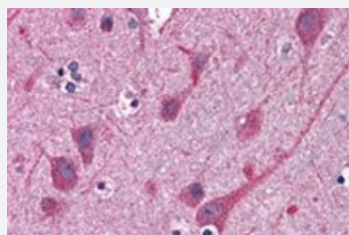
Size 100 ug

Applications



Western Blot (Tissue lysate)

STAP2 polyclonal antibody (Cat # PAB6042) staining (0.03 ug/mL) of human heart lysate (35 ug protein in RIPA buffer). Primary incubation was 1 hour. Detected by chemiluminescence.



Immunohistochemistry (Formalin/PFA-fixed paraffin-embedded sections)

STAP2 polyclonal antibody (Cat # PAB6042)(3.8 ug/mL) staining of paraffin embedded human cortex. Steamed antigen retrieval with citrate buffer pH 6, AP-staining.

Specification

Product Description	Goat polyclonal antibody raised against synthetic peptide of STAP2.
Immunogen	A synthetic peptide corresponding to C-terminus of human STAP2.
Sequence	C-ELQKKLEKRRALEH
Host	Goat
Theoretical MW (kDa)	49.6
Reactivity	Human

Specificity	This antibody is expected to recognize both reported isoforms (as represented by NP_060190.2 and NP_001013863.1).
Form	Liquid
Purification	Antigen affinity purification
Concentration	0.5 mg/mL
Recommend Usage	ELISA (1:16000) Western Blot (0.05-0.3 ug/mL) Immunohistochemistry (Formalin/PFA-fixed paraffin-embedded sections) (1-2 ug/mL) The optimal working dilution should be determined by the end user.
Storage Buffer	In Tris saline, pH 7.3 (0.5% BSA, 0.02% sodium azide)
Storage Instruction	Store at -20°C. Aliquot to avoid repeated freezing and thawing.
Note	This product contains sodium azide: a POISONOUS AND HAZARDOUS SUBSTANCE which should be handled by trained staff only.

Applications

- Western Blot (Tissue lysate)

STAP2 polyclonal antibody (Cat # PAB6042) staining (0.03 ug/mL) of human heart lysate (35 ug protein in RIPA buffer). Primary incubation was 1 hour. Detected by chemiluminescence.

- Immunohistochemistry (Formalin/PFA-fixed paraffin-embedded sections)

STAP2 polyclonal antibody (Cat # PAB6042)(3.8 ug/mL) staining of paraffin embedded human cortex. Steamed antigen retrieval with citrate buffer pH 6, AP-staining.

- Enzyme-linked Immunoabsorbent Assay

Gene Info — STAP2

Entrez GeneID	55620
Protein Accession#	NP_060190.2;NP_001013863.1
Gene Name	STAP2
Gene Alias	BKS, FLJ20234
Gene Description	signal transducing adaptor family member 2

Omim ID	607881
Gene Ontology	Hyperlink
Gene Summary	This gene encodes the substrate of breast tumor kinase, an Src-type non-receptor tyrosine kinase . The encoded protein possesses domains and several tyrosine phosphorylation sites characteristic of adaptor proteins that mediate the interactions linking proteins involved in signal transduction pathways. Alternative splicing results in multiple transcript variants. [provided by RefSeq]
Other Designations	breast tumor kinase substrate brk kinase substrate signal-transducing adaptor protein-2

Publication Reference

- [STAP-2/BKS, an adaptor/docking protein, modulates STAT3 activation in acute-phase response through its YXXQ motif.](#)

Minoguchi M, Minoguchi S, Aki D, Joo A, Yamamoto T, Yumioka T, Matsuda T, Yoshimura A.

The Journal of Biological Chemistry 2003 Mar; 278(13):11182.

Disease

- [Genetic Predisposition to Disease](#)
- [Narcolepsy](#)