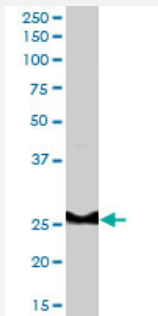


# GRAP polyclonal antibody

Catalog # PAB6031      Size 100 ug

## Applications



### Western Blot (Tissue lysate)

GRAP polyclonal antibody (Cat # PAB6031) staining (0.3 ug/mL) of human thymus lysate (35 ug protein in RIPA buffer). Primary incubation was 1 hour. Detected by chemiluminescence.

## Specification

**Product Description** Goat polyclonal antibody raised against synthetic peptide of GRAP.

**Immunogen** A synthetic peptide corresponding to human GRAP.

**Sequence** C-GFFPRSYVQPVHL

**Host** Goat

**Theoretical MW (kDa)** 25.3

**Reactivity** Human

**Form** Liquid

**Purification** Antigen affinity purification

**Concentration** 0.5 mg/mL

**Quality Control Testing** Antibody Reactive Against Synthetic Peptide.

**Recommend Usage**  
 ELISA (1:32000)  
 Western Blot (0.3-1 ug/mL)  
 The optimal working dilution should be determined by the end user.

Storage Buffer	In Tris saline, pH 7.3 (0.5% BSA, 0.02% sodium azide)
Storage Instruction	Store at -20°C. Aliquot to avoid repeated freezing and thawing.
Note	This product contains sodium azide: a POISONOUS AND HAZARDOUS SUBSTANCE which should be handled by trained staff only.

## Applications

- Western Blot (Tissue lysate)

GRAP polyclonal antibody (Cat # PAB6031) staining (0.3 ug/mL) of human thymus lysate (35 ug protein in RIPA buffer). Primary incubation was 1 hour. Detected by chemiluminescence.

- Enzyme-linked Immunoabsorbent Assay

## Gene Info — GRAP

Entrez GeneID	<a href="#">10750</a>
Protein Accession#	<a href="#">NP_006604.1</a>
Gene Name	GRAP
Gene Alias	MGC64880
Gene Description	GRB2-related adaptor protein
Omim ID	<a href="#">604330</a>
Gene Ontology	<a href="#">Hyperlink</a>
Gene Summary	This gene encodes a member of the GRB2/Sem5/Drk family. This member functions as a cytoplasmic signaling protein which contains an SH2 domain flanked by two SH3 domains. The SH2 domain interacts with ligand-activated receptors for stem cell factor and erythropoietin, and facilitates the formation of a stable complex with the BCR-ABL oncoprotein. This protein also associates with the Ras guanine nucleotide exchange factor SOS1 (son of sevenless homolog 1) through its N-terminal SH3 domain. [provided by RefSeq]
Other Designations	growth factor receptor-bound protein 2-related adaptor protein

## Publication Reference

- [The immunoglobulin tail tyrosine motif upgrades memory-type BCRs by incorporating a Grb2-Btk signalling module.](#)

Engels N, Konig LM, Schulze W, Radtke D, Vanshylla K, Lutz J, Winkler TH, Nitschke L, Wienands J.

Nature Communications 2014 Nov; 5:5456.

Application: WB, Human, DG75 B cells

- [Grap is a novel SH3-SH2-SH3 adaptor protein that couples tyrosine kinases to the Ras pathway.](#)

Feng GS, Ouyang YB, Hu DP, Shi ZQ, Gentz R, Ni J.

The Journal of Biological Chemistry 1996 May; 271(21):12129.

Application: IP, WB-Ce, Human, K-562, MO7e, MO7eR, TF1 cells

## Disease

- [Genetic Predisposition to Disease](#)
- [Osteoporosis](#)