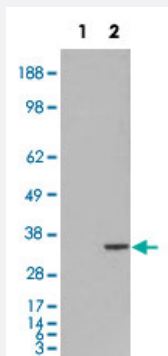


ORC6L polyclonal antibody

Catalog # PAB6026 Size 100 ug

Applications



Western Blot (Transfected lysate)

HEK293 overexpressing ORC6L and probed with ORC6L polyclonal antibody (Cat # PAB6026) (mock transfection in first lane), tested by Origene.

Specification

Product Description	Goat polyclonal antibody raised against synthetic peptide of ORC6L.
Immunogen	A synthetic peptide corresponding to C-terminus of human ORC6L.
Sequence	C-ENAASAQKATAE
Host	Goat
Theoretical MW (kDa)	28.1
Reactivity	Human
Form	Liquid
Recommend Usage	Western Blot (1-3 ug/mL) The optimal working dilution should be determined by the end user.
Storage Buffer	In Tris saline, pH 7.3 (0.5% BSA, 0.02% sodium azide)
Storage Instruction	Store at -20°C. Aliquot to avoid repeated freezing and thawing.

Note

This product contains sodium azide: a POISONOUS AND HAZARDOUS SUBSTANCE which should be handled by trained staff only.

Applications

- Western Blot (Transfected lysate)

HEK293 overexpressing ORC6L and probed with ORC6L polyclonal antibody (Cat # PAB6026) (mock transfection in first lane), tested by Origene.

Gene Info — ORC6L

Entrez GeneID [23594](#)

Protein Accession# [NP_055136.1](#)

Gene Name ORC6L

Gene Alias ORC6

Gene Description origin recognition complex, subunit 6 like (yeast)

Omim ID [607213](#)

Gene Ontology [Hyperlink](#)

Gene Summary

The origin recognition complex (ORC) is a highly conserved six subunit protein complex essential for the initiation of the DNA replication in eukaryotic cells. Studies in yeast demonstrated that ORC binds specifically to origins of replication and serves as a platform for the assembly of additional initiation factors such as Cdc6 and Mcm proteins. The protein encoded by this gene is a subunit of the ORC complex. It has been shown that this protein and ORC1L are loosely associated with the core complex consisting of ORC2L, -3L, -4L and -5L. Gene silencing studies with small interfering RNA demonstrated that this protein plays an essential role in coordinating chromosome replication and segregation with cytokinesis. [provided by RefSeq]

Other Designations origin recognition complex subunit 6|origin recognition complex, subunit 6 homolog-like

Pathway

- [Cell cycle](#)