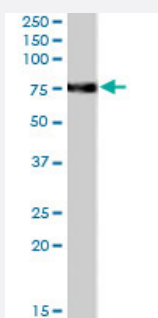


# FEM1C polyclonal antibody

Catalog # PAB6015

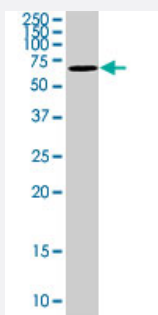
Size 100 ug

## Applications



### Western Blot (Tissue lysate)

FEM1C polyclonal antibody (Cat # PAB6015) staining (0.5 ug/mL) of rat kidney lysate (RIPA buffer, 35 ug total protein per lane). Primary incubated for 1 hour. Detected by western blot using chemiluminescence.



### Western Blot (Cell lysate)

FEM1C polyclonal antibody (Cat # PAB6015). Western blot analysis of FEM1C expression in HepG2.

## Specification

|                      |   |
|----------------------|---|
| Product Description  | Goat polyclonal antibody raised against synthetic peptide of FEM1C. |
| Immunogen            | A synthetic peptide corresponding to human FEM1C.                   |
| Sequence             | C-HIPEKLETFFVSLHR   |
| Host                 | Goat  |
| Theoretical MW (kDa) | 68.7  |
| Reactivity           | Mouse, Rat  |
| Form                 | Liquid  |

|                         |  |
|-------------------------|--|
| Purification            | Antigen affinity purification  |
| Concentration           | 0.5 mg/mL  |
| Quality Control Testing | Antibody Reactive Against Synthetic Peptide.   |
| Recommend Usage         | ELISA (1:8000)<br>Western Blot (0.3-1 ug/mL)<br>The optimal working dilution should be determined by the end user.     |
| Storage Buffer          | In Tris saline, pH 7.3 (0.5% BSA, 0.02% sodium azide)  |
| Storage Instruction     | Store at -20°C.<br>Aliquot to avoid repeated freezing and thawing.   |
| Note                    | This product contains sodium azide: a POISONOUS AND HAZARDOUS SUBSTANCE which should be handled by trained staff only. |

## Applications

- Western Blot (Tissue lysate)

FEM1C polyclonal antibody (Cat # PAB6015) staining (0.5 ug/mL) of rat kidney lysate (RIPA buffer, 35 ug total protein per lane). Primary incubated for 1 hour. Detected by western blot using chemiluminescence.

- Western Blot (Cell lysate)

FEM1C polyclonal antibody (Cat # PAB6015). Western blot analysis of FEM1C expression in HepG2.

[Protocol Download](#)

- Enzyme-linked Immunoabsorbent Assay

## Gene Info — FEM1C

|                    |   |
|--------------------|---|
| Entrez GeneID      | <a href="#">56929</a>                             |
| Protein Accession# | <a href="#">NP_064562.1</a>                       |
| Gene Name          | FEM1C   |
| Gene Alias         | EUROIMAGE686608, EUROIMAGE783647, FEM1A, KIAA1785 |
| Gene Description   | fem-1 homolog c (C. elegans)                      |
| Omim ID            | <a href="#">608767</a>                            |

## Gene Ontology

[Hyperlink](#)

## Other Designations

feminization 1 homolog a

## Publication Reference

- [F1Aalpha, a death receptor-binding protein homologous to the Caenorhabditis elegans sex-determining protein, FEM-1, is a caspase substrate that mediates apoptosis.](#)

Chan SL, Tan KO, Zhang L, Yee KS, Ronca F, Chan MY, Yu VC.

The Journal of Biological Chemistry 1999 Nov; 274(45):32461.

## Disease

- [Insulin Resistance](#)
- [Polycystic Ovary Syndrome](#)
- [Sex determination](#)