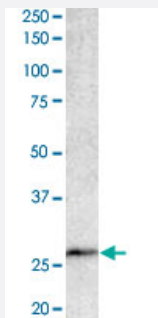


BCL7A polyclonal antibody

Catalog # PAB6001

Size 100 ug

Applications



Western Blot (Tissue lysate)

BCL7A polyclonal antibody (Cat # PAB6001) staining (1 ug/mL) of human lymphnode lysate (RIPA buffer, 35 ug total protein per lane). Primary incubated for 1 hour. Detected by western blot using chemiluminescence.

Specification

Product Description Goat polyclonal antibody raised against synthetic peptide of BCL7A.

Immunogen A synthetic peptide corresponding to human BCL7A.

Sequence C-MKLEASQQNSEEM

Host Goat

Theoretical MW (kDa) 25.0, 22.8

Reactivity Human

Form Liquid

Purification Antigen affinity purification

Concentration 0.5 mg/mL

Quality Control Testing Antibody Reactive Against Synthetic Peptide.

Recommend Usage
 ELISA (1:4000)
 Western blot (1-3 ug/mL)
 The optimal working dilution should be determined by the end user.

Storage Buffer	In Tris saline, pH 7.3 (0.5% BSA, 0.02% sodium azide)
Storage Instruction	Store at -20°C. Aliquot to avoid repeated freezing and thawing.
Note	This product contains sodium azide: a POISONOUS AND HAZARDOUS SUBSTANCE which should be handled by trained staff only.

Applications

- Western Blot (Tissue lysate)

BCL7A polyclonal antibody (Cat # PAB6001) staining (1 ug/mL) of human lymphnode lysate (RIPA buffer, 35 ug total protein per lane). Primary incubated for 1 hour. Detected by western blot using chemiluminescence.

- Enzyme-linked Immunoabsorbent Assay

Gene Info — BCL7A

Entrez GeneID	605
Protein Accession#	NP_066273
Gene Name	BCL7A
Gene Alias	BCL7
Gene Description	B-cell CLL/lymphoma 7A
Omim ID	601406
Gene Ontology	Hyperlink
Gene Summary	This gene is directly involved, with Myc and IgH, in a three-way gene translocation in a Burkitt lymphoma cell line. As a result of the gene translocation, the N-terminal region of the gene product is disrupted, which is thought to be related to the pathogenesis of a subset of high-grade B cell non-Hodgkin lymphoma. The N-terminal segment involved in the translocation includes the region that shares a strong sequence similarity with those of BCL7B and BCL7C. Two transcript variants encoding different isoforms have been found for this gene. [provided by RefSeq]
Other Designations	B-cell CLL/lymphoma-7

Publication Reference

- [Molecular cloning of complex chromosomal translocation t\(8;14;12\)\(q24.1;q32.3;q24.1\) in a Burkitt lymphoma cell line defines a new gene \(BCL7A\) with homology to caldesmon.](#)

Zani VJ, Asou N, Jadayel D, Heward JM, Shipley J, Nacheva E, Takasuki K, Catovsky D, Dyer MJ.

Blood 1996 Apr; 87(8):3124.

Disease

- [Genetic Predisposition to Disease](#)
- [Hematologic Diseases](#)
- [Hodgkin Disease](#)
- [Lymphoma](#)
- [Lymphoproliferative Disorders](#)
- [Occupational Diseases](#)
- [Waldenstrom Macroglobulinemia](#)
- [Werner syndrome](#)