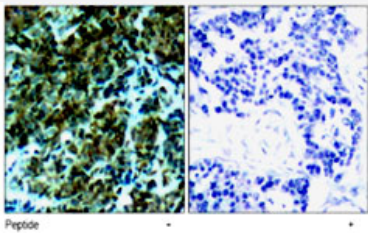


Ctdp1 polyclonal antibody

Catalog # PAB5879 Size 100 ug

Applications



Immunohistochemistry (Formalin/PFA-fixed paraffin-embedded sections)

Immunohistochemical analysis of paraffin-embedded human breast carcinoma tissue, using Ctdp1 polyclonal antibody (Cat # PAB5879).

Specification

Product Description	Rabbit polyclonal antibody raised against synthetic peptide of Ctdp1.
Immunogen	A synthetic peptide corresponding to N-terminus of mouse Ctdp1.
Host	Rabbit
Reactivity	Human, Mouse
Form	Liquid
Quality Control Testing	Antibody Reactive Against Synthetic Peptide.
Recommend Usage	The optimal working dilution should be determined by the end user.
Storage Buffer	In PBS, pH 7.2 (50% glycerol, 0.01% sodium azide)
Storage Instruction	Store at -20°C. Aliquot to avoid repeated freezing and thawing.
Note	This product contains sodium azide: a POISONOUS AND HAZARDOUS SUBSTANCE which should be handled by trained staff only.

Applications

- Western Blot
- Immunohistochemistry (Formalin/PFA-fixed paraffin-embedded sections)
Immunohistochemical analysis of paraffin-embedded human breast carcinoma tissue, using Ctdp1 polyclonal antibody (Cat # PAB5879).
- Enzyme-linked Immunoabsorbent Assay

Gene Info — Ctdp1

Entrez GeneID	67655
Gene Name	Ctdp1
Gene Alias	4930563P03Rik, AW553592
Gene Description	CTD (carboxy-terminal domain, RNA polymerase II, polypeptide A) phosphatase, subunit 1
Gene Ontology	Hyperlink
Gene Summary	CTD (carboxy-terminal domain
Other Designations	CTD (carboxy-terminal domain, RNA polymerase II, polypeptide A) phosphatase, subunit 1