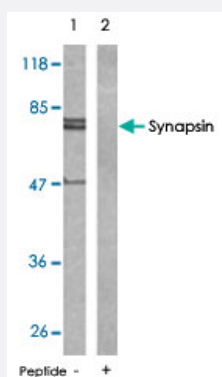


Synapsin polyclonal antibody

Catalog # PAB5602 Size 100 ug

Applications



Western Blot (Tissue lysate)

Western blot analysis of extract from mouse brain tissue using Synapsin polyclonal antibody (Cat # PAB5602) .

Specification

Product Description	Rabbit polyclonal antibody raised against synthetic peptide of Synapsin.
Immunogen	A synthetic peptide corresponding to residues surrounding S9 of human Synapsin.
Host	Rabbit
Reactivity	Human, Mouse, Rat
Form	Liquid
Quality Control Testing	Antibody Reactive Against Synthetic Peptide.
Recommend Usage	Western Blot (1:500-1:1000) The optimal working dilution should be determined by the end user.
Storage Buffer	In PBS, 150 mM NaCl, pH 7.4 (50% glycerol, 0.02% sodium azide)
Storage Instruction	Store at -20°C. Aliquot to avoid repeated freezing and thawing.
Note	This product contains sodium azide: a POISONOUS AND HAZARDOUS SUBSTANCE which should be handled by trained staff only.

Applications

- Western Blot (Tissue lysate)

Western blot analysis of extract from mouse brain tissue using Synapsin polyclonal antibody (Cat # PAB5602) .

Publication Reference

- [Phosphorylation of Numb family proteins. Possible involvement of Ca²⁺/calmodulin-dependent protein kinases.](#)

Tokumitsu H, Hatano N, Inuzuka H, Sueyoshi Y, Yokokura S, Ichimura T, Nozaki N, Kobayashi R.

The Journal of Biological Chemistry 2005 Aug; 280(42):35108.

- [Phosphorylation of synapsin I by cAMP-dependent protein kinase controls synaptic vesicle dynamics in developing neurons.](#)

Bonanomi D, Menegon A, Miccio A, Ferrari G, Corradi A, Kao HT, Benfenati F, Valtorta F.

Journal of Neuroscience 2005 Aug; 25(32):7299.

- [Lithium activates the Wnt and phosphatidylinositol 3-kinase Akt signaling pathways to promote cell survival in the absence of soluble survival factors.](#)

Sinha D, Wang Z, Ruchalski KL, Levine JS, Krishnan S, Lieberthal W, Schwartz JH, Borkan SC.

American Journal of Physiology. Gastrointestinal and Liver Physiology 2004 Nov; 288(4):F703.