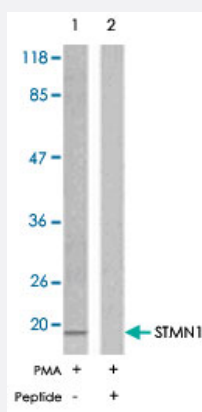


STMN1 polyclonal antibody

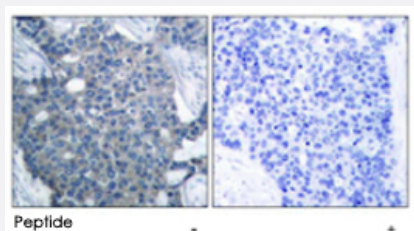
Catalog # PAB5597 Size 100 ug

Applications



Western Blot (Cell lysate)

Western blot analysis of the extracts from Jurkat cells untreated or treated with PMA (1 ng/ml, 15 min) using STMN1 polyclonal antibody (Cat # PAB5597) .



Immunohistochemistry (Formalin/PFA-fixed paraffin-embedded sections)

Immunohistochemical analysis of paraffin-embedded human breast carcinoma tissue using STMN1 polyclonal antibody (Cat # PAB5597) .

Specification

Product Description	Rabbit polyclonal antibody raised against synthetic peptide of STMN1.
Immunogen	A synthetic peptide corresponding to residues surrounding S24 of human STMN1.
Host	Rabbit
Reactivity	Human, Mouse, Rat
Form	Liquid
Quality Control Testing	Antibody Reactive Against Synthetic Peptide.

Recommend Usage	Immunohistochemistry (1:50-1:100) Western Blot (1:500-1:1000) The optimal working dilution should be determined by the end user.
Storage Buffer	In PBS, 150 mM NaCl, pH 7.4 (50% glycerol, 0.02% sodium azide)
Storage Instruction	Store at -20°C. Aliquot to avoid repeated freezing and thawing.
Note	This product contains sodium azide: a POISONOUS AND HAZARDOUS SUBSTANCE which should be handled by trained staff only.

Applications

- Western Blot (Cell lysate)

Western blot analysis of the extracts from Jurkat cells untreated or treated with PMA (1 ng/ml, 15 min) using STMN1 polyclonal antibody (Cat # PAB5597).

- Immunohistochemistry (Formalin/PFA-fixed paraffin-embedded sections)

Immunohistochemical analysis of paraffin-embedded human breast carcinoma tissue using STMN1 polyclonal antibody (Cat # PAB5597).

Gene Info — STMN1

Entrez GeneID	3925
Gene Name	STMN1
Gene Alias	LAP18, Lag, OP18, PP17, PP19, PR22, SMN
Gene Description	stathmin 1/oncoprotein 18
Omim ID	151442
Gene Ontology	Hyperlink
Gene Summary	This gene belongs to the stathmin family of genes. It encodes a ubiquitous cytosolic phosphoprotein proposed to function as an intracellular relay integrating regulatory signals of the cellular environment. The encoded protein is involved in the regulation of the microtubule filament system by destabilizing microtubules. It prevents assembly and promotes disassembly of microtubules. Multiple transcript variants encoding different isoforms have been found for this gene. [provided by RefSeq]
Other Designations	OTTHUMP00000008527 OTTHUMP00000008528 OTTHUMP00000008530 leukemia-associated phosphoprotein p18 metablastin oncoprotein 18 phosphoprotein 19 prosofin stathmin 1

Publication Reference

- [p21-activated kinase 1 regulates microtubule dynamics by phosphorylating tubulin cofactor B.](#)

Vadlamudi RK, Barnes CJ, Rayala S, Li F, Balasenthil S, Marcus S, Goodson HV, Sahin AA, Kumar R.

Molecular and Cellular Biology 2005 May; 25(9):3726.

- [Protein kinase MARK/PAR-1 is required for neurite outgrowth and establishment of neuronal polarity.](#)

Biernat J, Wu YZ, Timm T, Zheng-Fischhofer Q, Mandelkow E, Meijer L, Mandelkow EM.

Molecular Biology of the Cell 2002 Nov; 13(11):4013.

- [A growth factor-dependent nuclear kinase phosphorylates p27\(Kip1\) and regulates cell cycle progression.](#)

Boehm M, Yoshimoto T, Crook MF, Nallamshetty S, True A, Nabel GJ, Nabel EG.

The EMBO Journal 2002 Jul; 21(13):3390.

Application: IF, WB-Tr, Human, Mouse, HEK 293, NIH/3T3 cells

Pathway

- [MAPK signaling pathway](#)

Disease

- [Anorexia Nervosa](#)
- [Bulimia](#)
- [Genetic Predisposition to Disease](#)
- [Startle Reaction](#)