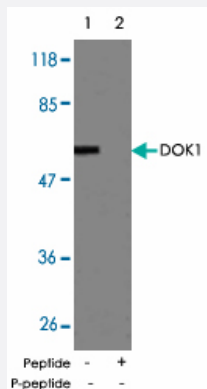


DOK1 polyclonal antibody

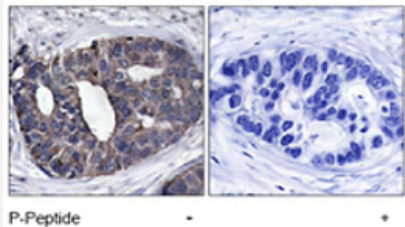
Catalog # PAB5500 Size 100 ug

Applications



Western Blot (Cell lysate)

Western blot analysis of extracts from Jurkat cells , using DOK1 polyclonal antibody (Cat # PAB5500) .



Immunohistochemistry (Formalin/PFA-fixed paraffin-embedded sections)

Immunohistochemical analysis of paraffin-embedded human breast carcinoma tissue using DOK1 polyclonal antibody (Cat # PAB5500) .

Specification

Product Description	Rabbit polyclonal antibody raised against synthetic peptide of DOK1.
Immunogen	A synthetic peptide corresponding to residues surrounding Y362 of human DOK1.
Host	Rabbit
Reactivity	Human, Mouse, Rat
Form	Liquid
Quality Control Testing	Antibody Reactive Against Synthetic Peptide.

Recommend Usage	Immunohistochemistry (1:50-1:100) Western Blot (1:500-1:1000) The optimal working dilution should be determined by the end user.
Storage Buffer	In PBS, 150 mM NaCl, pH 7.4 (50% glycerol, 0.02% sodium azide)
Storage Instruction	Store at -20°C. Aliquot to avoid repeated freezing and thawing.
Note	This product contains sodium azide: a POISONOUS AND HAZARDOUS SUBSTANCE which should be handled by trained staff only.

Applications

- Western Blot (Cell lysate)

Western blot analysis of extracts from Jurkat cells , using DOK1 polyclonal antibody (Cat # PAB5500) .

- Immunohistochemistry (Formalin/PFA-fixed paraffin-embedded sections)

Immunohistochemical analysis of paraffin-embedded human breast carcinoma tissue using DOK1 polyclonal antibody (Cat # PAB5500) .

Gene Info — DOK1

Entrez GeneID	1796
Gene Name	DOK1
Gene Alias	MGC117395, MGC138860, P62DOK
Gene Description	docking protein 1, 62kDa (downstream of tyrosine kinase 1)
Omim ID	602919
Gene Ontology	Hyperlink
Gene Summary	Docking protein 1 is constitutively tyrosine phosphorylated in hematopoietic progenitors isolated from chronic myelogenous leukemia (CML) patients in the chronic phase. It may be a critical substrate for p210(bcr/abl), a chimeric protein whose presence is associated with CML. Docking protein 1 contains a putative pleckstrin homology domain at the amino terminus and ten PXXP SH3 recognition motifs. Docking protein 2 binds p120 (RasGAP) from CML cells. It has been postulated to play a role in mitogenic signaling. [provided by RefSeq]
Other Designations	Downstream of tyrosine kinase 1 docking protein 1 docking protein 1 (downstream of tyrosine kinase 1) docking protein 1, 62kD (downstream of tyrosine kinase 1)

Publication Reference

- [The pre-B cell receptor signaling for apoptosis is negatively regulated by Fc gamma RIIB.](#)

Kato I, Takai T, Kudo A.

Journal of Immunology 2002 Jan; 168(2):629.

Application: IP, WB, Mouse, Mouse B cells

- [Domain-dependent function of the rasGAP-binding protein p62Dok in cell signaling.](#)

Songyang Z, Yamanashi Y, Liu D, Baltimore D.

The Journal of Biological Chemistry 2000 Jan; 276(4):2459.

- [Evidence that Lck-mediated phosphorylation of p56dok and p62dok may play a role in CD2 signaling.](#)

Nemorin JG, Duplay P.

The Journal of Biological Chemistry 2000 May; 275(19):14590.

Application: IP, WB-Ce, WB-Tr, Human, Jurkat cells

Disease

- [Genetic Predisposition to Disease](#)
- [Leukemia](#)