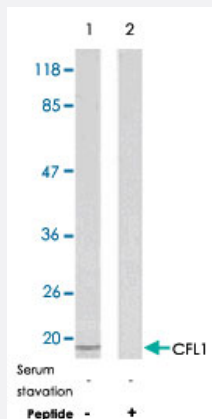


CFL1 polyclonal antibody

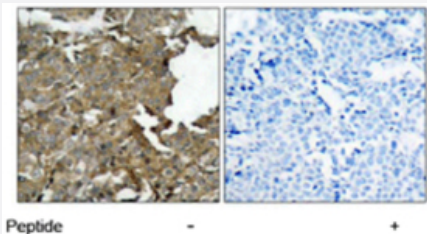
Catalog # PAB5302 Size 100 ug

Applications



Western Blot (Cell lysate)

Western blot analysis of the extracts from COLO 205 cells using CFL1 polyclonal antibody (Cat # PAB5302) .



Immunohistochemistry (Formalin/PFA-fixed paraffin-embedded sections)

Immunohistochemical analysis of paraffin-embedded human breast carcinoma tissue using CFL1 polyclonal antibody (Cat # PAB5302).

Specification

Product Description	Rabbit polyclonal antibody raised against synthetic peptide of CFL1.
Immunogen	A synthetic peptide corresponding to residues surrounding S3 of human CFL1.
Host	Rabbit
Reactivity	Human, Mouse, Rat
Form	Liquid
Quality Control Testing	Antibody Reactive Against Synthetic Peptide.

Recommend Usage	Immunohistochemistry (1:50-1:100) Western Blot (1:500-1:1000) The optimal working dilution should be determined by the end user.
Storage Buffer	In PBS, 150 mM NaCl, pH 7.4 (50% glycerol, 0.02% sodium azide)
Storage Instruction	Store at -20°C. Aliquot to avoid repeated freezing and thawing.
Note	This product contains sodium azide: a POISONOUS AND HAZARDOUS SUBSTANCE which should be handled by trained staff only.

Applications

- Western Blot (Cell lysate)

Western blot analysis of the extracts from COLO 205 cells using CFL1 polyclonal antibody (Cat # PAB5302) .

- Immunohistochemistry (Formalin/PFA-fixed paraffin-embedded sections)

Immunohistochemical analysis of paraffin-embedded human breast carcinoma tissue using CFL1 polyclonal antibody (Cat # PAB5302).

Gene Info — CFL1

Entrez GeneID	1072
Gene Name	CFL1
Gene Alias	CFL
Gene Description	cofilin 1 (non-muscle)
Omim ID	601442
Gene Ontology	Hyperlink
Gene Summary	Cofilin is a widely distributed intracellular actin-modulating protein that binds and depolymerizes filamentous F-actin and inhibits the polymerization of monomeric G-actin in a pH-dependent manner. It is involved in the translocation of actin-cofilin complex from cytoplasm to nucleus.[supplied by OMIM]
Other Designations	-

Publication Reference

- [Detection of urine cofilin-1 from patients hospitalized in the intensive care unit using the metal-enhanced fluorescence technique.](#)

Chao CH, Chang YF, Chen HC, Lin LY, Yu PC, Chang YS, Lee YJ.

Sensors and Actuators B: Chemical 2010 Oct; 173:184.

Application: ELISA, Human, Urine from intensive care unit (ICU) patients

- [MAPKAPK-2-mediated LIM-kinase activation is critical for VEGF-induced actin remodeling and cell migration.](#)

Kobayashi M, Nishita M, Mishima T, Ohashi K, Mizuno K.

The EMBO Journal 2006 Feb; 25(4):713.

Application: WB, Human, MSS31 cells, HUVECs

- [Calcium signal-induced cofilin dephosphorylation is mediated by Slingshot via calcineurin.](#)

Wang Y, Shibasaki F, Mizuno K.

The Journal of Biological Chemistry 2005 Jan; 280(13):12683.

Application: WB-Tr, Human, HEK 293T, HeLa cells

- [Proteome changes in ovarian epithelial cells derived from women with BRCA1 mutations and family histories of cancer.](#)

Smith-Beckerman DM, Fung KW, Williams KE, Auersperg N, Godwin AK, Burlingame AL.

Molecular & Cellular Proteomics 2004 Dec; 4(2):156.

Pathway

- [Axon guidance](#)
- [Fc gamma R-mediated phagocytosis](#)
- [Regulation of actin cytoskeleton](#)

Disease

- [Spinal Dysraphism](#)