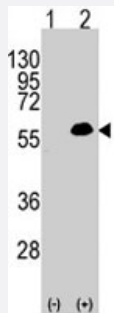


MEF2C polyclonal antibody

Catalog # PAB4943

Size 400 uL

Applications



Western Blot (Transfected lysate)

Western blot analysis of MEF2C (arrow) using rabbit MEF2C polyclonal antibody (Cat # PAB4943). 293 cell lysate (2 ug/lane) either nontransfected (Lane 1) or transiently transfected with the MEF2C gene (Lane 2) (Origene Technologies).



Immunohistochemistry (Formalin/PFA-fixed paraffin-embedded sections)

Formalin-fixed and paraffin-embedded human brain tissue reacted with MEF2C polyclonal antibody (Cat # PAB4943), which was peroxidase-conjugated to the secondary antibody, followed by DAB staining. This data demonstrates the use of this antibody for immunohistochemistry; clinical relevance has not been evaluated.

Specification

Product Description	Rabbit polyclonal antibody raised against synthetic peptide of MEF2C.
Immunogen	A synthetic peptide (conjugated with KLH) corresponding to residues surrounding T300 of human MEF2C.
Host	Rabbit
Reactivity	Human
Form	Liquid
Purification	Protein A purification

Recommend Usage	ELISA (1:1000) Western Blot (1:50-100) Immunohistochemistry (1:10-50) The optimal working dilution should be determined by the end user.
Storage Buffer	In PBS (0.09% sodium azide)
Storage Instruction	Store at 4°C. For long term storage store at -20°C. Aliquot to avoid repeated freezing and thawing.
Note	This product contains sodium azide: a POISONOUS AND HAZARDOUS SUBSTANCE which should be handled by trained staff only.

Applications

- Western Blot (Transfected lysate)

Western blot analysis of MEF2C (arrow) using rabbit MEF2C polyclonal antibody (Cat # PAB4943). 293 cell lysate (2 ug/lane) either nontransfected (Lane 1) or transiently transfected with the MEF2C gene (Lane 2) (Origene Technologies).

- Immunohistochemistry (Formalin/PFA-fixed paraffin-embedded sections)

Formalin-fixed and paraffin-embedded human brain tissue reacted with MEF2C polyclonal antibody (Cat # PAB4943), which was peroxidase-conjugated to the secondary antibody, followed by DAB staining. This data demonstrates the use of this antibody for immunohistochemistry; clinical relevance has not been evaluated.

- Enzyme-linked Immunoabsorbent Assay

Gene Info — MEF2C

Entrez GeneID	4208
Protein Accession#	NP_002388:Q06413
Gene Name	MEF2C
Gene Alias	-
Gene Description	myocyte enhancer factor 2C
Omim ID	600662
Gene Ontology	Hyperlink
Gene Summary	polypeptide C (myocyte enhancer factor 2C)
Other Designations	MADS box transcription enhancer factor 2, polypeptide C (myocyte enhancer factor 2C)

Publication Reference

- [Membrane hyperpolarization triggers myogenin and myocyte enhancer factor-2 expression during human myoblast differentiation.](#)
Konig S, Hinard V, Arnaudeau S, Holzer N, Potter G, Bader CR, Bernheim L.
The Journal of Biological Chemistry 2004 Apr; 279(27):28187.
- [Mammalian vestigial-like 2, a cofactor of TEF-1 and MEF2 transcription factors that promotes skeletal muscle differentiation.](#)
Maeda T, Chapman DL, Stewart AF.
The Journal of Biological Chemistry 2002 Oct; 277(50):48889.
- [TEF-1 and MEF2 transcription factors interact to regulate muscle-specific promoters.](#)
Maeda T, Gupta MP, Stewart AF.
Biochemical and Biophysical Research Communications 2002 Jun; 294(4):791.

Pathway

- [MAPK signaling pathway](#)

Disease

- [Breast cancer](#)
- [Breast Neoplasms](#)
- [Cardiovascular Diseases](#)
- [Chromosome Deletion](#)
- [Diabetes Mellitus](#)
- [Disease Susceptibility](#)
- [Edema](#)
- [Fractures](#)
- [Genetic Predisposition to Disease](#)

- [Mental Retardation](#)
- [Syndrome](#)