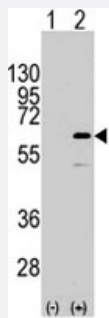


ELK1 polyclonal antibody

Catalog # PAB4937 Size 400 uL

Applications



Western Blot (Transfected lysate)

Western blot analysis of ELK1 (arrow) using rabbit ELK1 polyclonal antibody (Cat # PAB4937). 293 cell lysate (2 ug/lane) either nontransfected (Lane 1) or transiently transfected with the ELK1 gene (Lane 2) (Origene Technologies).

Specification

Product Description	Rabbit polyclonal antibody raised against synthetic peptide of ELK1.
Immunogen	A synthetic peptide (conjugated with KLH) corresponding to residues surrounding S383 of human ELK1.
Host	Rabbit
Reactivity	Human
Form	Liquid
Purification	Protein A purification
Recommend Usage	ELISA (1:1000) Western Blot (1:50-100) The optimal working dilution should be determined by the end user.
Storage Buffer	In PBS (0.09% sodium azide)
Storage Instruction	Store at 4°C. For long term storage store at -20°C. Aliquot to avoid repeated freezing and thawing.

Note

This product contains sodium azide: a POISONOUS AND HAZARDOUS SUBSTANCE which should be handled by trained staff only.

Applications

- Western Blot (Transfected lysate)

Western blot analysis of ELK1 (arrow) using rabbit ELK1 polyclonal antibody (Cat # PAB4937). 293 cell lysate (2 ug/lane) either nontransfected (Lane 1) or transiently transfected with the ELK1 gene (Lane 2) (Origene Technologies).

- Enzyme-linked Immunoabsorbent Assay

Gene Info — ELK1

Entrez GeneID [2002](#)

Protein Accession# [NP_005220;P19419](#)

Gene Name ELK1

Gene Alias -

Gene Description ELK1, member of ETS oncogene family

Omim ID [311040](#)

Gene Ontology [Hyperlink](#)

Gene Summary This gene is a member of the Ets family of transcription factors and of the ternary complex factor (TCF) subfamily. Proteins of the TCF subfamily form a ternary complex by binding to the the serum response factor and the serum response element in the promoter of the c-fos proto-oncogene. The protein encoded by this gene is a nuclear target for the ras-raf-MAPK signaling cascade. Alternatively spliced transcript variants encoding the same protein have been found for this gene. [provided by RefSeq]

Other Designations ELK1 protein|OTTHUMP00000023224|OTTHUMP00000023225

Publication Reference

- [SUMOylation regulates nucleo-cytoplasmic shuttling of Elk-1.](#)

Salinas S, Briancon-Marjollet A, Bossis G, Lopez MA, Piechaczyk M, Jariel-Encontre I, Debant A, Hipskind RA. Journal of Cellular Biology 2004 Jun; 165(6):767.

- [Dynamic interplay of the SUMO and ERK pathways in regulating Elk-1 transcriptional activity.](#)

Yang SH, Jaffray E, Hay RT, Sharrocks AD.

Molecular Cell 2003 Jul; 12(1):63.

- [Immediate-early gene induction by the stresses anisomycin and arsenite in human osteosarcoma cells involves MAPK cascade signaling to Elk-1, CREB and SRF.](#)

Bebien M, Salinas S, Becamel C, Richard V, Linares L, Hipkind RA.

Oncogene 2003 Mar; 22(12):1836.

Pathway

- [Endometrial cancer](#)
- [ErbB signaling pathway](#)
- [Focal adhesion](#)
- [GnRH signaling pathway](#)
- [Insulin signaling pathway](#)
- [MAPK signaling pathway](#)
- [Prion diseases](#)

Disease

- [Cardiovascular Diseases](#)
- [Diabetes Mellitus](#)
- [Edema](#)