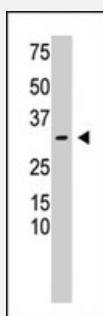


RCAN3 polyclonal antibody

Catalog # PAB4905

Size 400 uL

Applications



Western Blot (Tissue lysate)

The RCAN3 polyclonal antibody (Cat # PAB4905) is used in Western blot to detect RCAN3 in mouse heart tissue lysate.

Specification

Product Description	Rabbit polyclonal antibody raised against synthetic peptide of RCAN3.
Immunogen	A synthetic peptide (conjugated with KLH) corresponding to N-terminus of human RCAN3.
Host	Rabbit
Reactivity	Human, Mouse
Form	Liquid
Purification	Protein G purification
Recommend Usage	ELISA (1:1000) Western Blot (1:100-500) The optimal working dilution should be determined by the end user.
Storage Buffer	In PBS (0.09% sodium azide)
Storage Instruction	Store at 4°C. For long term storage store at -20°C. Aliquot to avoid repeated freezing and thawing.
Note	This product contains sodium azide: a POISONOUS AND HAZARDOUS SUBSTANCE which should be handled by trained staff only.

Applications

- Western Blot (Tissue lysate)

The RCAN3 polyclonal antibody (Cat # PAB4905) is used in Western blot to detect RCAN3 in mouse heart tissue lysate.

- Enzyme-linked Immunoabsorbent Assay

Gene Info — RCAN3

Entrez GeneID	11123
Protein Accession#	Q9UKA8
Gene Name	RCAN3
Gene Alias	DSCR1L2, MCIP3, RCN3, hRCN3
Gene Description	RCAN family member 3
Omim ID	605860
Gene Ontology	Hyperlink
Other Designations	Down syndrome candidate region 1-like 2 Down syndrome critical region gene 1-like 2 OTTHUM P00000003336 regulator of calcineurin 3

Disease

- [Genetic Predisposition to Disease](#)