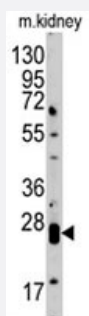


CLDN1 polyclonal antibody

Catalog # PAB4904

Size 400 uL

Applications



Western Blot (Tissue lysate)

Western blot analysis of CLDN1 polyclonal antibody (Cat # PAB4904) in mouse kidney tissue lysate (35 ug/lane). CLDN1 (arrow) was detected using the purified polyclonal antibody (1 : 60 dilution).

Specification

Product Description	Rabbit polyclonal antibody raised against synthetic peptide of CLDN1.
Immunogen	A synthetic peptide (conjugated with KLH) corresponding to the Loop2 region of human CLDN1.
Host	Rabbit
Reactivity	Human, Mouse
Form	Liquid
Purification	Ammonium sulfate precipitation
Recommend Usage	ELISA (1:1000) Western Blot (1:50-100) The optimal working dilution should be determined by the end user.
Storage Buffer	In PBS (0.09% sodium azide)
Storage Instruction	Store at 4°C. For long term storage store at -20°C. Aliquot to avoid repeated freezing and thawing.
Note	This product contains sodium azide: a POISONOUS AND HAZARDOUS SUBSTANCE which should be handled by trained staff only.

Applications

- Western Blot (Tissue lysate)

Western blot analysis of CLDN1 polyclonal antibody (Cat # PAB4904) in mouse kidney tissue lysate (35 ug/lane). CLDN1 (arrow) was detected using the purified polyclonal antibody (1 : 60 dilution).

- Enzyme-linked Immunoabsorbent Assay

Gene Info — CLDN1

Entrez GeneID	9076
---------------	----------------------

Protein Accession#	NP_066924;O95832
--------------------	----------------------------------

Gene Name	CLDN1
-----------	-------

Gene Alias	CLD1, ILVASC, SEMP1
------------	---------------------

Gene Description	claudin 1
------------------	-----------

Omim ID	603718 607626
---------	-------------------------------

Gene Ontology	Hyperlink
---------------	---------------------------

Gene Summary	Tight junctions represent one mode of cell-to-cell adhesion in epithelial or endothelial cell sheets, forming continuous seals around cells and serving as a physical barrier to prevent solutes and water from passing freely through the paracellular space. These junctions are comprised of sets of continuous networking strands in the outwardly facing cytoplasmic leaflet, with complementary grooves in the inwardly facing extracytoplasmic leaflet. The protein encoded by this gene, a member of the claudin family, is an integral membrane protein and a component of tight junction strands. Loss of function mutations result in neonatal ichthyosis-sclerosing cholangitis syndrome. [provided by RefSeq]
--------------	--

Other Designations	senescence-associated epithelial membrane protein 1
--------------------	---

Publication Reference

- [Selective up-regulation of claudin-1 and claudin-2 in colorectal cancer.](#)

Kinugasa T, Huo Q, Higashi D, Shibaguchi H, Kuroki M, Tanaka T, Futami K, Yamashita Y, Hachimine K, Maekawa S, Nabeshima K, Iwasaki H, Kuroki M.

Anticancer Research 2007 Nov; 27(6A):3729.

Application: IHC-P, Human, Human colorectal Cancer

- [Decreased expression of claudin-1 correlates with recurrence status in breast cancer.](#)

Morohashi S, Kusumi T, Sato F, Odagiri H, Chiba H, Yoshihara S, Hakamada K, Sasaki M, Kijima H.

International Journal of Molecular Medicine 2007 Aug; 20(2):139.

Application: IHC-P, Human, Human breast cancer

- [Claudin-1 and claudin-5 expression patterns differentiate lung squamous cell carcinomas from adenocarcinomas.](#)

Paschoud S, Bongiovanni M, Pache JC, Citi S.

Modern Pathology 2007 Sep; 20(9):947.

Application: IHC-P, Human, Human lung cancer

Pathway

- [Cell adhesion molecules \(CAMs\)](#)
- [Leukocyte transendothelial migration](#)
- [Pathogenic Escherichia coli infection - EHEC](#)
- [Tight junction](#)

Disease

- [Genetic Predisposition to Disease](#)
- [Hepatitis C](#)
- [Substance Abuse](#)
- [Tobacco Use Disorder](#)