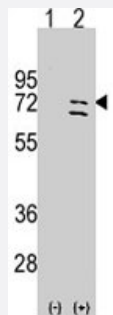


PARP6 polyclonal antibody

Catalog # PAB4873

Size 400 uL

Applications



Western Blot (Transfected lysate)

Western blot analysis of PARP6 (arrow) using rabbit PARP6 polyclonal antibody (Cat # PAB4873). 293 cell lysate (2 ug/lane) either nontransfected (Lane 1) or transiently transfected with the PARP6 gene (Lane 2) (Origene Technologies).

Specification

Product Description	Rabbit polyclonal antibody raised against synthetic peptide of PARP6.
Immunogen	A synthetic peptide (conjugated with KLH) corresponding to C-terminus of human PARP6.
Host	Rabbit
Reactivity	Human
Form	Liquid
Purification	Ammonium sulfate precipitation
Recommend Usage	ELISA (1:1000) Western Blot (1:10-50) The optimal working dilution should be determined by the end user.
Storage Buffer	In PBS (0.09% sodium azide)
Storage Instruction	Store at 4°C. For long term storage store at -20°C. Aliquot to avoid repeated freezing and thawing.
Note	This product contains sodium azide: a POISONOUS AND HAZARDOUS SUBSTANCE which should be handled by trained staff only.

Applications

- Western Blot (Transfected lysate)

Western blot analysis of PARP6 (arrow) using rabbit PARP6 polyclonal antibody (Cat # PAB4873). 293 cell lysate (2 ug/lane) either nontransfected (Lane 1) or transiently transfected with the PARP6 gene (Lane 2) (Origene Technologies).

- Enzyme-linked Immunoabsorbent Assay

Gene Info — PARP6

Entrez GeneID	56965
---------------	-----------------------

Protein Accession#	NP_064599:Q2NL67
--------------------	----------------------------------

Gene Name	PARP6
-----------	-------

Gene Alias	MGC131971
------------	-----------

Gene Description	poly (ADP-ribose) polymerase family, member 6
------------------	---

Gene Ontology	Hyperlink
---------------	---------------------------

Gene Summary	O
--------------	---

Other Designations	-
--------------------	---

Publication Reference

- [The PARP superfamily.](#)

Ame JC, Spenlehauer C, de Murcia G.

Bioessays 2004 Aug; 26(8):882.

Disease

- [Tobacco Use Disorder](#)