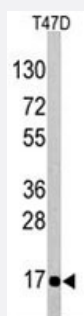


AGR2 polyclonal antibody

Catalog # PAB4864

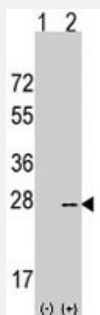
Size 400 uL

Applications



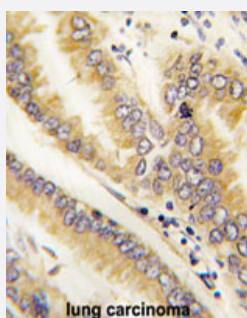
Western Blot (Cell lysate)

Western blot analysis of AGR2 polyclonal antibody (Cat # PAB4864) in T-47D cell lysate (35 ug/lane). AGR2 (arrow) was detected using the purified polyclonal antibody (1 : 60 dilution).



Western Blot (Transfected lysate)

Western blot analysis of AGR2 (arrow) using rabbit AGR2 polyclonal antibody (Cat # PAB4864). 293 cell lysate (2 ug/lane) either nontransfected (Lane 1) or transiently transfected with the AGR2 gene (Lane 2) (Origene Technologies).



Immunohistochemistry (Formalin/PFA-fixed paraffin-embedded sections)

Formalin-fixed and paraffin-embedded human lung carcinoma tissue reacted with AGR2 polyclonal antibody (Cat # PAB4864), which was peroxidase-conjugated to the secondary antibody, followed by DAB staining. This data demonstrates the use of this antibody for immunohistochemistry; clinical relevance has not been evaluated.

Specification

Product Description

Rabbit polyclonal antibody raised against synthetic peptide of AGR2.

Immunogen

A synthetic peptide (conjugated with KLH) corresponding to N-terminus of human AGR2.

Host	Rabbit
Reactivity	Human
Form	Liquid
Purification	Ammonium sulfate precipitation
Recommend Usage	ELISA (1:1000) Western Blot (1:50-100) Immunohistochemistry (1:10-50) The optimal working dilution should be determined by the end user.
Storage Buffer	In PBS (0.09% sodium azide)
Storage Instruction	Store at 4°C. For long term storage store at -20°C. Aliquot to avoid repeated freezing and thawing.
Note	This product contains sodium azide: a POISONOUS AND HAZARDOUS SUBSTANCE which should be handled by trained staff only.

Applications

- Western Blot (Cell lysate)

Western blot analysis of AGR2 polyclonal antibody (Cat # PAB4864) in T-47D cell lysate (35 ug/lane). AGR2 (arrow) was detected using the purified polyclonal antibody (1 : 60 dilution).

- Western Blot (Transfected lysate)

Western blot analysis of AGR2 (arrow) using rabbit AGR2 polyclonal antibody (Cat # PAB4864). 293 cell lysate (2 ug/lane) either nontransfected (Lane 1) or transiently transfected with the AGR2 gene (Lane 2) (Origene Technologies).

- Immunohistochemistry (Formalin/PFA-fixed paraffin-embedded sections)

Formalin-fixed and paraffin-embedded human lung carcinoma tissue reacted with AGR2 polyclonal antibody (Cat # PAB4864), which was peroxidase-conjugated to the secondary antibody, followed by DAB staining. This data demonstrates the use of this antibody for immunohistochemistry; clinical relevance has not been evaluated.

- Enzyme-linked Immunoabsorbent Assay

Gene Info — AGR2

Entrez GeneID	10551
Protein Accession#	NP_006399;O95994

Gene Name	AGR2
Gene Alias	AG2, GOB-4, HAG-2, XAG-2
Gene Description	anterior gradient homolog 2 (Xenopus laevis)
Omim ID	606358
Gene Ontology	Hyperlink
Other Designations	anterior gradient 2 homolog secreted cement gland homolog

Publication Reference

- [Physiological stress induces the metastasis marker AGR2 in breast cancer cells.](#)
Zweitig DR, Smirnov DA, Connelly MC, Terstappen LW, O'Hara SM, Moran E.
Molecular and Cellular Biochemistry 2007 Dec; 306(1-2):255.
- [Increased expression of anterior gradient-2 is significantly associated with poor survival of prostate cancer patients.](#)
Zhang Y, Forootan SS, Liu D, Barraclough R, Foster CS, Rudland PS, Ke Y.
Prostate Cancer and Prostatic Diseases 2007 Apr; 10(3):293.

Application: IHC, WB, Human, Du-145, LNCaP, PC-3, PC-3M, PNT-2 cells, Prostate tissues
- [hAG-2 and hAG-3, human homologues of genes involved in differentiation, are associated with oestrogen receptor-positive breast tumours and interact with metastasis gene C4.4a and dystroglycan.](#)
Fletcher GC, Patel S, Tyson K, Adam PJ, Schenker M, Loader JA, Daviet L, Legrain P, Parekh R, Harris AL, Terrett JA.
British Journal of Cancer 2003 Feb; 88(4):579.

Disease

- [Colitis](#)
- [Crohn Disease](#)
- [Genetic Predisposition to Disease](#)
- [Inflammatory Bowel Diseases](#)