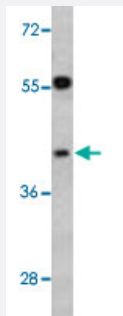


TOB2 polyclonal antibody

Catalog # PAB4858

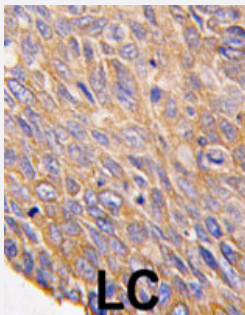
Size 400 uL

Applications



Western Blot (Cell lysate)

Western blot analysis of HepG2 cell lysate (35 ug/lane) with TOB2 polyclonal antibody (Cat # PAB4858).



Immunohistochemistry (Formalin/PFA-fixed paraffin-embedded sections)

Formalin-fixed and paraffin-embedded human lung carcinoma tissue reacted with TOB2 polyclonal antibody (Cat # PAB4858), which was peroxidase-conjugated to the secondary antibody, followed by DAB staining. This data demonstrates the use of this antibody for immunohistochemistry; clinical relevance has not been evaluated.

Specification

Product Description	Rabbit polyclonal antibody raised against synthetic peptide of TOB2.
Immunogen	A synthetic peptide (conjugated with KLH) corresponding to N-terminus of human TOB2.
Host	Rabbit
Reactivity	Human
Form	Liquid
Purification	Protein A purification

Recommend Usage	ELISA (1:1000) Western Blot (1:50-100) Immunohistochemistry (1:50) The optimal working dilution should be determined by the end user.
Storage Buffer	In PBS (0.09% sodium azide)
Storage Instruction	Store at 4°C. For long term storage store at -20°C. Aliquot to avoid repeated freezing and thawing.
Note	This product contains sodium azide: a POISONOUS AND HAZARDOUS SUBSTANCE which should be handled by trained staff only.

Applications

- Western Blot (Cell lysate)

Western blot analysis of HepG2 cell lysate (35 ug/lane) with TOB2 polyclonal antibody (Cat # PAB4858).

- Immunohistochemistry (Formalin/PFA-fixed paraffin-embedded sections)

Formalin-fixed and paraffin-embedded human lung carcinoma tissue reacted with TOB2 polyclonal antibody (Cat # PAB4858), which was peroxidase-conjugated to the secondary antibody, followed by DAB staining. This data demonstrates the use of this antibody for immunohistochemistry; clinical relevance has not been evaluated.

- Enzyme-linked Immunoabsorbent Assay

Gene Info — TOB2

Entrez GeneID	10766
Protein Accession#	NP_057356:Q14106
Gene Name	TOB2
Gene Alias	TOB4, TOBL, TROB2
Gene Description	transducer of ERBB2, 2
Omim ID	607396
Gene Ontology	Hyperlink
Gene Summary	TOB2 belongs to the TOB (see TOB1; MIM 605523)/BTG1 (MIM 109580) family of antiproliferative proteins, which are involved in the regulation of cell cycle progression.[supplied by OMIM]
Other Designations	-

Publication Reference

- [Antiproliferative proteins of the BTG/Tob family are degraded by the ubiquitin-proteasome system.](#)

Sasajima H, Nakagawa K, Yokosawa H.

European Journal of Biochemistry 2002 Jul; 269(14):3596.

- [Association of ANA, a member of the antiproliferative Tob family proteins, with a Caf1 component of the CCR4 transcriptional regulatory complex.](#)

Y Yoshida, E Hosoda, T Nakamura, T Yamamoto.

Japanese Journal of Cancer Research 2001 Jun; 92(6):592.

- [A serine/threonine kinase p90rsk1 phosphorylates the anti-proliferative protein Tob.](#)

Suzuki T, Matsuda S, Tsuzuku JK, Yoshida Y, Yamamoto T.

Genes to Cells : Devoted to Molecular & Cellular Mechanisms 2001 Feb; 6(2):131.