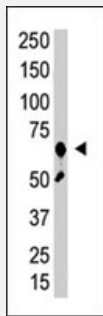


ZMIZ1 polyclonal antibody

Catalog # PAB4820

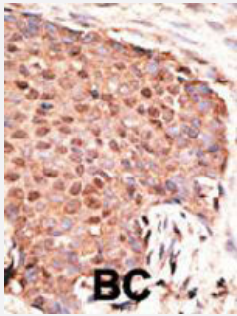
Size 400 uL

Applications



Western Blot (Tissue lysate)

The ZMIZ1 polyclonal antibody (Cat # PAB4820) is used in Western blot to detect ZMIZ1 in placenta tissue lysate.



Immunohistochemistry (Formalin/PFA-fixed paraffin-embedded sections)

Formalin-fixed and paraffin-embedded human cancer tissue reacted with ZMIZ1 polyclonal antibody (Cat # PAB4820), which was peroxidase-conjugated to the secondary antibody, followed by AEC staining. This data demonstrates the use of this antibody for immunohistochemistry; clinical relevance has not been evaluated. BC = breast carcinoma.

Specification

Product Description	Rabbit polyclonal antibody raised against synthetic peptide of ZMIZ1.
Immunogen	A synthetic peptide (conjugated with KLH) corresponding to C-terminus of human ZMIZ1.
Host	Rabbit
Reactivity	Human
Form	Liquid
Purification	Protein G purification

Recommend Usage	ELISA (1:1000) Western Blot (1:100-500) Immunohistochemistry (1:50-100) The optimal working dilution should be determined by the end user.
Storage Buffer	In PBS (0.09% sodium azide)
Storage Instruction	Store at 4°C. For long term storage store at -20°C. Aliquot to avoid repeated freezing and thawing.
Note	This product contains sodium azide: a POISONOUS AND HAZARDOUS SUBSTANCE which should be handled by trained staff only.

Applications

- Western Blot (Tissue lysate)

The ZMIZ1 polyclonal antibody (Cat # PAB4820) is used in Western blot to detect ZMIZ1 in placenta tissue lysate.

- Immunohistochemistry (Formalin/PFA-fixed paraffin-embedded sections)

Formalin-fixed and paraffin-embedded human cancer tissue reacted with ZMIZ1 polyclonal antibody (Cat # PAB4820), which was peroxidase-conjugated to the secondary antibody, followed by AEC staining. This data demonstrates the use of this antibody for immunohistochemistry; clinical relevance has not been evaluated. BC = breast carcinoma.

- Enzyme-linked Immunoabsorbent Assay

Gene Info — ZMIZ1

Entrez GeneID	57178
Protein Accession#	NP_065071;XP_166091
Gene Name	ZMIZ1
Gene Alias	FLJ13541, KIAA1224, MIZ, RAI17, Zimp10, hZIMP10
Gene Description	zinc finger, MIZ-type containing 1
Omim ID	607159
Gene Ontology	Hyperlink
Gene Summary	O

Other Designations

FLJ00092 protein|OTTHUMP00000019922|OTTHUMP00000060191|PIAS-like protein hZimp10|RP11-519K18.1|retinoic acid induced 17|zinc finger-containing, Miz1, PIAS-like protein on chromosome 10

Disease

- [Alzheimer Disease](#)
- [Crohn Disease](#)
- [Diabetes Mellitus](#)
- [Diabetic Nephropathies](#)
- [Disease Progression](#)
- [Genetic Predisposition to Disease](#)
- [Kidney Failure](#)
- [Multiple Sclerosis](#)
- [Tobacco Use Disorder](#)