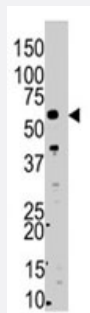


SMYD5 polyclonal antibody

Catalog # PAB4818

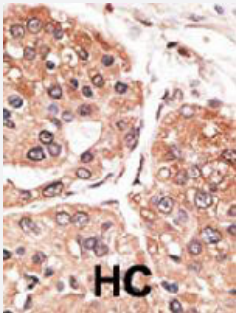
Size 400 uL

Applications



Western Blot (Tissue lysate)

The SMYD5 polyclonal antibody (Cat # PAB4818) is used in Western blot to detect SMYD5 in mouse liver tissue lysate.



Immunohistochemistry (Formalin/PFA-fixed paraffin-embedded sections)

Formalin-fixed and paraffin-embedded human hepatocellular carcinoma tissue reacted with SMYD5 polyclonal antibody (Cat # PAB4818), which was peroxidase-conjugated to the secondary antibody, followed by DAB staining. This data demonstrates the use of this antibody for immunohistochemistry; clinical relevance has not been evaluated. HC = hepatocarcinoma.

Specification

Product Description	Rabbit polyclonal antibody raised against synthetic peptide of SMYD5.
Immunogen	A synthetic peptide (conjugated with KLH) corresponding to C-terminus of human SMYD5.
Host	Rabbit
Reactivity	Human, Mouse
Form	Liquid
Purification	Protein G purification

Recommend Usage	ELISA (1:1000) Western Blot (1:100-500) Immunohistochemistry (1:50-100) The optimal working dilution should be determined by the end user.
Storage Buffer	In PBS (0.09% sodium azide)
Storage Instruction	Store at 4°C. For long term storage store at -20°C. Aliquot to avoid repeated freezing and thawing.
Note	This product contains sodium azide: a POISONOUS AND HAZARDOUS SUBSTANCE which should be handled by trained staff only.

Applications

- Western Blot (Tissue lysate)

The SMYD5 polyclonal antibody (Cat # PAB4818) is used in Western blot to detect SMYD5 in mouse liver tissue lysate.

- Immunohistochemistry (Formalin/PFA-fixed paraffin-embedded sections)

Formalin-fixed and paraffin-embedded human hepatocellular carcinoma tissue reacted with SMYD5 polyclonal antibody (Cat # PAB4818), which was peroxidase-conjugated to the secondary antibody, followed by DAB staining. This data demonstrates the use of this antibody for immunohistochemistry; clinical relevance has not been evaluated. HC = hepatocarcinoma.

- Enzyme-linked Immunoabsorbent Assay

Gene Info — SMYD5

Entrez GeneID	10322
Protein Accession#	NP_006053
Gene Name	SMYD5
Gene Alias	NN8-4AG, RAI15, RRG1, ZMYND23
Gene Description	SMYD family member 5
Gene Ontology	Hyperlink
Other Designations	retinoic acid induced 15 retinoic acid responsive