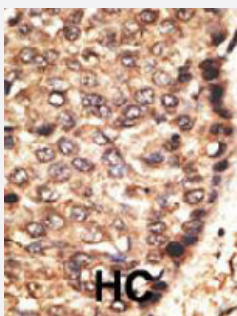


MMP24 polyclonal antibody

Catalog # PAB4789

Size 400 uL

Applications



Immunohistochemistry (Formalin/PFA-fixed paraffin-embedded sections)

Formalin-fixed and paraffin-embedded human hepatocellular carcinoma tissue reacted with MMP24 polyclonal antibody (Cat # PAB4789), which was peroxidase-conjugated to the secondary antibody, followed by AEC staining. This data demonstrates the use of this antibody for immunohistochemistry; clinical relevance has not been evaluated. HC = hepatocarcinoma.

Specification

Product Description	Rabbit polyclonal antibody raised against synthetic peptide of MMP24.
Immunogen	A synthetic peptide (conjugated with KLH) corresponding to internal region of human MMP24.
Host	Rabbit
Reactivity	Human
Form	Liquid
Purification	Protein G purification
Recommend Usage	ELISA (1:1000) Western Blot (1:100-500) Immunohistochemistry (1:50-100) The optimal working dilution should be determined by the end user.
Storage Buffer	In PBS (0.09% sodium azide)
Storage Instruction	Store at 4°C. For long term storage store at -20°C. Aliquot to avoid repeated freezing and thawing.

Note

This product contains sodium azide: a POISONOUS AND HAZARDOUS SUBSTANCE which should be handled by trained staff only.

Applications

- Immunohistochemistry (Formalin/PFA-fixed paraffin-embedded sections)

Formalin-fixed and paraffin-embedded human hepatocellular carcinoma tissue reacted with MMP24 polyclonal antibody (Cat # PAB4789), which was peroxidase-conjugated to the secondary antibody, followed by AEC staining. This data demonstrates the use of this antibody for immunohistochemistry; clinical relevance has not been evaluated. HC = hepatocarcinoma.

- Enzyme-linked Immunoabsorbent Assay

Gene Info — MMP24

Entrez GeneID [10893](#)

Protein Accession# [MM24_HUMAN](#)

Gene Name MMP24

Gene Alias MMP25, MT-MMP5, MT5-MMP

Gene Description matrix metalloproteinase 24 (membrane-inserted)

Omim ID [604871](#)

Gene Ontology [Hyperlink](#)

Gene Summary Proteins of the matrix metalloproteinase (MMP) family are involved in the breakdown of extracellular matrix in normal physiological processes, such as embryonic development, reproduction, and tissue remodeling, as well as in disease processes, such as arthritis and metastasis. Most MMP's are secreted as inactive proproteins which are activated when cleaved by extracellular proteinases. However, the protein encoded by this gene is a member of the membrane-type MMP (MT-MMP) subfamily; each member of this subfamily contains a potential transmembrane domain suggesting that these proteins are expressed at the cell surface rather than secreted. This protein activates MMP2 by cleavage. The gene has previously been referred to as MMP25 but has been renamed MMP24. [provided by RefSeq]

Other Designations matrix metalloproteinase 24|matrix metalloproteinase 24 (membrane-inserted)|membrane-type 5 matrix metalloproteinase

Publication Reference

- [mRNA expression of the five membrane-type matrix metalloproteinases MT1-MT5 in human prostatic cell lines and their down-regulation in human malignant prostatic tissue.](#)

Jung M, Romer A, Keyszer G, Lein M, Kristiansen G, Schnorr D, Loening SA, Jung K.

Prostate 2003 May; 55(2):89.

- [Human membrane type-4 matrix metalloproteinase \(MT4-MMP\) is encoded by a novel major transcript: isolation of complementary DNA clones for human and mouse mt4-mmp transcripts.](#)

Kajita M, Kinoh H, Ito N, Takamura A, Itoh Y, Okada A, Sato H, Seiki M.

FEBS Letters 1999 Sep; 457(3):353.

- [Matrix metalloproteinases.](#)

Nagase H, Woessner JF Jr.

The Journal of Biological Chemistry 1999 Jul; 274(31):21491.

Disease

- [Cardiovascular Diseases](#)
- [Diabetes Mellitus](#)
- [Disease Progression](#)
- [Edema](#)
- [Genetic Predisposition to Disease](#)
- [Hepatitis C](#)
- [Liver Cirrhosis](#)