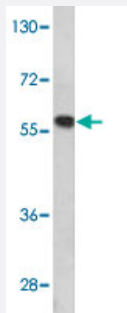


MMP19 polyclonal antibody

Catalog # PAB4786

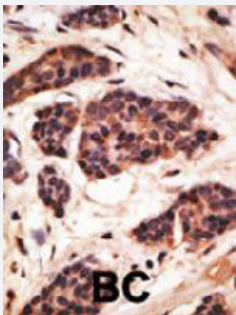
Size 400 uL

Applications



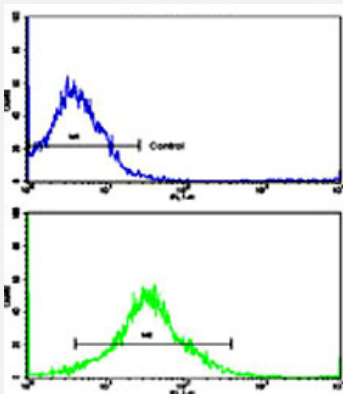
Western Blot (Cell lysate)

Western blot analysis of K-562 cell lysate (35 ug/lane) with MMP19 polyclonal antibody (Cat # PAB4786).



Immunohistochemistry (Formalin/PFA-fixed paraffin-embedded sections)

Formalin-fixed and paraffin-embedded human cancer tissue reacted with MMP19 polyclonal antibody (Cat # PAB4786), which was peroxidase-conjugated to the secondary antibody, followed by DAB staining. This data demonstrates the use of this antibody for immunohistochemistry; clinical relevance has not been evaluated. BC = breast carcinoma.



Flow Cytometry

Flow cytometric analysis of K-562 cells using MMP19 polyclonal antibody (Cat # PAB4786)(bottom histogram) compared to a negative control cell (top histogram).

FITC-conjugated goat-anti-rabbit secondary antibodies were used for the analysis.

Specification

Product Description

Rabbit polyclonal antibody raised against synthetic peptide of MMP19.

Immunogen	A synthetic peptide (conjugated with KLH) corresponding to C-terminus of human MMP19.
Host	Rabbit
Reactivity	Human
Form	Liquid
Purification	Protein G purification
Recommend Usage	ELISA (1:1000) Western Blot (1:100-500) Immunohistochemistry (1:50-100) Flow cytometry (1:10-50) The optimal working dilution should be determined by the end user.
Storage Buffer	In PBS (0.09% sodium azide)
Storage Instruction	Store at 4°C. For long term storage store at -20°C. Aliquot to avoid repeated freezing and thawing.
Note	This product contains sodium azide: a POISONOUS AND HAZARDOUS SUBSTANCE which should be handled by trained staff only.

Applications

- Western Blot (Cell lysate)

Western blot analysis of K-562 cell lysate (35 ug/lane) with MMP19 polyclonal antibody (Cat # PAB4786).

- Immunohistochemistry (Formalin/PFA-fixed paraffin-embedded sections)

Formalin-fixed and paraffin-embedded human cancer tissue reacted with MMP19 polyclonal antibody (Cat # PAB4786), which was peroxidase-conjugated to the secondary antibody, followed by DAB staining. This data demonstrates the use of this antibody for immunohistochemistry; clinical relevance has not been evaluated. BC = breast carcinoma.

- Enzyme-linked Immunoabsorbent Assay

- Flow Cytometry

Flow cytometric analysis of K-562 cells using MMP19 polyclonal antibody (Cat # PAB4786)(bottom histogram) compared to a negative control cell (top histogram).

FITC-conjugated goat-anti-rabbit secondary antibodies were used for the analysis.

Gene Info — MMP19

Entrez GeneID

[4327](#)

Protein Accession#	MM19_HUMAN
Gene Name	MMP19
Gene Alias	MMP18, RASI-1
Gene Description	matrix metalloproteinase 19
Omim ID	601807
Gene Ontology	Hyperlink
Gene Summary	Proteins of the matrix metalloproteinase (MMP) family are involved in the breakdown of extracellular matrix in normal physiological processes, such as embryonic development, reproduction, and tissue remodeling, as well as in disease processes, such as arthritis and metastasis. Most MMP's are secreted as inactive proproteins which are activated when cleaved by extracellular proteinases. This protein is expressed in human epidermis and it has a role in cellular proliferation as well as migration and adhesion to type I collagen. Multiple transcript variants encoding distinct isoforms have been identified for this gene. [provided by RefSeq]
Other Designations	matrix metalloproteinase 18 matrix metalloproteinase 19

Publication Reference

- [Matrix metalloproteinase 19 regulates insulin-like growth factor-mediated proliferation, migration, and adhesion in human keratinocytes through proteolysis of insulin-like growth factor binding protein-3.](#)

Sadowski T, Dietrich S, Koschinsky F, Sedlacek R.

Molecular and Cellular Biology 2003 Nov; 14(11):4569.

Application: IF, IHC-P, WB, Human, Human skin

- [Matrix metalloproteinase-19 is expressed by proliferating epithelium but disappears with neoplastic dedifferentiation.](#)

Impola U, Toriseva M, Suomela S, Jeskanen L, Hieta N, Jahkola T, Grenman R, Kahari VM, Saarialho-Kere U.

International Journal of Cancer 2003 Mar; 103(6):709.

Application: IHC, WB, Human, Keratinocytes, Skin

- [Matrix metalloproteinase-19 is expressed in myeloid cells in an adhesion-dependent manner and associates with the cell surface.](#)

Mauch S, Kolb C, Kolb B, Sadowski T, Sedlacek R.

Journal of Immunology 2002 Feb; 168(3):1244.

Application: Flow Cyt, IP, WB, Human, HL-60, PBMCs, THP-1 cells

Disease

- [Alzheimer disease](#)
- [Asthma](#)
- [Cardiovascular Diseases](#)
- [Chorioamnionitis](#)
- [Diabetes Complications](#)
- [Diabetes Mellitus](#)
- [Edema](#)
- [Fetal Membranes](#)
- [Genetic Predisposition to Disease](#)
- [Metabolic Syndrome X](#)
- [Neoplasms](#)
- [Obstetric Labor](#)
- [Osteoporosis](#)
- [Pre-Eclampsia](#)
- [Premature Birth](#)