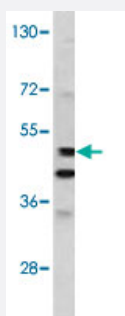


MMP10 polyclonal antibody

Catalog # PAB4779

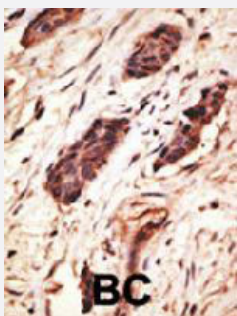
Size 400 uL

Applications



Western Blot (Tissue lysate)

Western blot analysis of mouse spleen tissue lysate (35 ug/lane) with MMP10 polyclonal antibody (Cat # PAB4779).



Immunohistochemistry (Formalin/PFA-fixed paraffin-embedded sections)

Formalin-fixed and paraffin-embedded human cancer tissue reacted with MMP10 polyclonal antibody (Cat # PAB4779), which was peroxidase-conjugated to the secondary antibody, followed by DAB staining. This data demonstrates the use of this antibody for immunohistochemistry; clinical relevance has not been evaluated. BC = breast carcinoma.

Specification

Product Description

Rabbit polyclonal antibody raised against synthetic peptide of MMP10.

Immunogen

A synthetic peptide (conjugated with KLH) corresponding to C-terminus of human MMP10.

Host

Rabbit

Reactivity

Human, Mouse

Form

Liquid

Purification

Protein G purification

Recommend Usage	ELISA (1:1000) Western Blot (1:100-500) Immunohistochemistry (1:50-100) The optimal working dilution should be determined by the end user.
Storage Buffer	In PBS (0.09% sodium azide)
Storage Instruction	Store at 4°C. For long term storage store at -20°C. Aliquot to avoid repeated freezing and thawing.
Note	This product contains sodium azide: a POISONOUS AND HAZARDOUS SUBSTANCE which should be handled by trained staff only.

Applications

- Western Blot (Tissue lysate)

Western blot analysis of mouse spleen tissue lysate (35 ug/lane) with MMP10 polyclonal antibody (Cat # PAB4779).

- Immunohistochemistry (Formalin/PFA-fixed paraffin-embedded sections)

Formalin-fixed and paraffin-embedded human cancer tissue reacted with MMP10 polyclonal antibody (Cat # PAB4779), which was peroxidase-conjugated to the secondary antibody, followed by DAB staining. This data demonstrates the use of this antibody for immunohistochemistry; clinical relevance has not been evaluated. BC = breast carcinoma.

- Enzyme-linked Immunoabsorbent Assay

Gene Info — MMP10

Entrez GeneID	4319
Protein Accession#	MM10_HUMAN
Gene Name	MMP10
Gene Alias	SL-2, STMY2
Gene Description	matrix metalloproteinase 10 (stromelysin 2)
Omim ID	185260
Gene Ontology	Hyperlink

Gene Summary

Proteins of the matrix metalloproteinase (MMP) family are involved in the breakdown of extracellular matrix in normal physiological processes, such as embryonic development, reproduction, and tissue remodeling, as well as in disease processes, such as arthritis and metastasis. Most MMP's are secreted as inactive proproteins which are activated when cleaved by extracellular proteinases. The enzyme encoded by this gene degrades proteoglycans and fibronectin. The gene is part of a cluster of MMP genes which localize to chromosome 11q22.3. [provided by RefSeq]

Other Designations

matrix metalloprotease 10|matrix metalloproteinase 10|matrix metalloproteinase 10 (stromelysin 2)|stromelysin 2|transin 2

Publication Reference

- [Matrix metalloproteinases.](#)

Nagase H, Woessner JF Jr.

The Journal of Biological Chemistry 1999 Jul; 274(31):21491.

- [Fine physical mapping of the human matrix metalloproteinase genes clustered on chromosome 11q22.3.](#)

Pendas AM, Santamaria I, Alvarez MV, Pritchard M, Lopez-Otin C.

Genomics 1996 Oct; 37(2):266.

Disease

- [Adenocarcinoma](#)
- [Aortic Aneurysm](#)
- [Cardiovascular Diseases](#)
- [Chorioamnionitis](#)
- [Coronary Artery Disease](#)
- [Diabetes Mellitus](#)
- [Disease Progression](#)
- [Disease Susceptibility](#)
- [Edema](#)
- [Esophageal Neoplasms](#)
- [Fetal Membranes](#)

- [Genetic Predisposition to Disease](#)
- [Hepatitis C](#)
- [Liver Cirrhosis](#)
- [Myocardial Infarction](#)
- [Obstetric Labor](#)
- [Pre-Eclampsia](#)
- [Premature Birth](#)