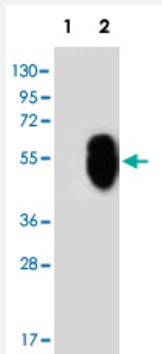


MLLT6 polyclonal antibody

Catalog # PAB4777

Size 400 uL

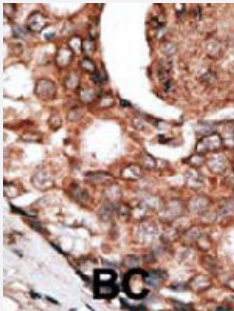
Applications



Western Blot (Transfected lysate)

Western blot analysis of MLLT6 (arrow) using MLLT6 polyclonal antibody (Cat # PAB4777).

293 cell lysates (2 ug/lane) either nontransfected (Lane 1) or transiently transfected with the MLLT6 gene (Lane 2).



Immunohistochemistry (Formalin/PFA-fixed paraffin-embedded sections)

Formalin-fixed and paraffin-embedded human cancer tissue reacted with MLLT6 polyclonal antibody (Cat # PAB4777), which was peroxidase-conjugated to the secondary antibody, followed by DAB staining. This data demonstrates the use of this antibody for immunohistochemistry; clinical relevance has not been evaluated. BC = breast carcinoma.

Specification

Product Description	Rabbit polyclonal antibody raised against synthetic peptide of MLLT6.
Immunogen	A synthetic peptide (conjugated with KLH) corresponding to C-terminus of human MLLT6.
Host	Rabbit
Reactivity	Human
Form	Liquid
Purification	Protein G purification

Recommend Usage	ELISA (1:1000) Western Blot (1:50-100) Immunohistochemistry (1:50-100) The optimal working dilution should be determined by the end user.
Storage Buffer	In PBS (0.09% sodium azide)
Storage Instruction	Store at 4°C. For long term storage store at -20°C. Aliquot to avoid repeated freezing and thawing.
Note	This product contains sodium azide: a POISONOUS AND HAZARDOUS SUBSTANCE which should be handled by trained staff only.

Applications

- Western Blot (Transfected lysate)

Western blot analysis of MLLT6 (arrow) using MLLT6 polyclonal antibody (Cat # PAB4777).
293 cell lysates (2 ug/lane) either nontransfected (Lane 1) or transiently transfected with the MLLT6 gene (Lane 2).

- Immunohistochemistry (Formalin/PFA-fixed paraffin-embedded sections)

Formalin-fixed and paraffin-embedded human cancer tissue reacted with MLLT6 polyclonal antibody (Cat # PAB4777), which was peroxidase-conjugated to the secondary antibody, followed by DAB staining. This data demonstrates the use of this antibody for immunohistochemistry; clinical relevance has not been evaluated. BC = breast carcinoma.

Gene Info — MLLT6

Entrez GeneID	4302
Protein Accession#	NP_005928
Gene Name	MLLT6
Gene Alias	AF17, FLJ23480
Gene Description	myeloid/lymphoid or mixed-lineage leukemia (trithorax homolog, Drosophila); translocated to, 6
Omim ID	600328
Gene Ontology	Hyperlink
Gene Summary	Drosophila); translocated to
Other Designations	Myeloid/lymphoid or mixed-lineage leukemia, translocated to, 6 myeloid/lymphoid or mixed-lineage leukemia (trithorax homolog); translocated to, 6 trithorax homolog

Publication Reference

- [Leucine-zipper dimerization motif encoded by the AF17 gene fused to ALL-1 \(MLL\) in acute leukemia.](#)

Prasad R, Leshkowitz D, Gu Y, Alder H, Nakamura T, Saito H, Huebner K, Berger R, Croce CM, Canaani E.

PNAS 1994 Aug; 91(17):8107.

Application: WB-Ce, WB-Ti, Human, Human acute leukemia, 679, ALL-1, B1, GM-607, GM-1500, K-562, KCI-22, MV4, PC-3, T93G cells