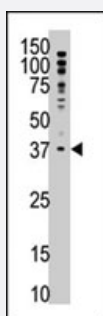


MAGEF1 polyclonal antibody

Catalog # PAB4759

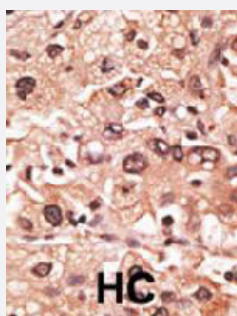
Size 400 uL

Applications



Western Blot (Cell lysate)

The MAGEF1 polyclonal antibody (Cat # PAB4759) is used in Western blot to detect MAGEF1 in A-375 cell lysate.



Immunohistochemistry (Formalin/PFA-fixed paraffin-embedded sections)

Formalin-fixed and paraffin-embedded human hepatocellular carcinoma tissue reacted with MAGEF1 polyclonal antibody (Cat # PAB4759), which was peroxidase-conjugated to the secondary antibody, followed by AEC staining. This data demonstrates the use of this antibody for immunohistochemistry; clinical relevance has not been evaluated. HC = hepatocarcinoma.

Specification

Product Description	Rabbit polyclonal antibody raised against synthetic peptide of MAGEF1.
Immunogen	A synthetic peptide (conjugated with KLH) corresponding to C-terminus of human MAGEF1.
Host	Rabbit
Reactivity	Human
Form	Liquid
Purification	Protein G purification

Recommend Usage	ELISA (1:1000) Western Blot (1:100-500) Immunohistochemistry (1:50-100) The optimal working dilution should be determined by the end user.
Storage Buffer	In PBS (0.09% sodium azide)
Storage Instruction	Store at 4°C. For long term storage store at -20°C. Aliquot to avoid repeated freezing and thawing.
Note	This product contains sodium azide: a POISONOUS AND HAZARDOUS SUBSTANCE which should be handled by trained staff only.

Applications

- Western Blot (Cell lysate)

The MAGEF1 polyclonal antibody (Cat # PAB4759) is used in Western blot to detect MAGEF1 in A-375 cell lysate.

- Immunohistochemistry (Formalin/PFA-fixed paraffin-embedded sections)

Formalin-fixed and paraffin-embedded human hepatocellular carcinoma tissue reacted with MAGEF1 polyclonal antibody (Cat # PAB4759), which was peroxidase-conjugated to the secondary antibody, followed by AEC staining. This data demonstrates the use of this antibody for immunohistochemistry; clinical relevance has not been evaluated. HC = hepatocarcinoma.

- Enzyme-linked Immunoabsorbent Assay

Gene Info — MAGEF1

Entrez GeneID	64110
Protein Accession#	NP_071432
Gene Name	MAGEF1
Gene Alias	MGC19617
Gene Description	melanoma antigen family F, 1
Omim ID	609267
Gene Ontology	Hyperlink
Gene Summary	This intronless gene encodes a member of the MAGE superfamily. It is ubiquitously expressed in normal tissues and in tumor cells. This gene includes a microsatellite repeat in the coding region. [provided by RefSeq]

Other Designations

MAGE-F1 antigen|melanoma-associated antigen F1

Publication Reference

- [MAGE-F1, a novel ubiquitously expressed member of the MAGE superfamily.](#)

Stone B, Schummer M, Paley PJ, Crawford M, Ford M, Urban N, Nelson BH.

Gene 2001 Apr; 267(2):173.