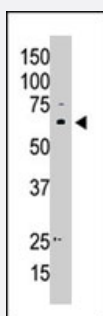


MAGED2 polyclonal antibody

Catalog # PAB4757

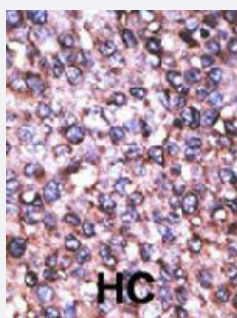
Size 400 uL

Applications



Western Blot (Cell lysate)

The MAGED2 polyclonal antibody (Cat # PAB4757) is used in Western blot to detect MAGED2 in A-549 cell lysate.



Immunohistochemistry (Formalin/PFA-fixed paraffin-embedded sections)

Formalin-fixed and paraffin-embedded human hepatocellular carcinoma tissue reacted with MAGED2 polyclonal antibody (Cat # PAB4757), which was peroxidase-conjugated to the secondary antibody, followed by AEC staining. This data demonstrates the use of this antibody for immunohistochemistry; clinical relevance has not been evaluated. HC = hepatocarcinoma.

Specification

Product Description	Rabbit polyclonal antibody raised against synthetic peptide of MAGED2.
Immunogen	A synthetic peptide (conjugated with KLH) corresponding to C-terminus of human MAGED2.
Host	Rabbit
Reactivity	Human
Form	Liquid
Purification	Protein G purification

Recommend Usage	ELISA (1:1000) Western Blot (1:100-500) Immunohistochemistry (1:50-100) The optimal working dilution should be determined by the end user.
Storage Buffer	In PBS (0.09% sodium azide)
Storage Instruction	Store at 4°C. For long term storage store at -20°C. Aliquot to avoid repeated freezing and thawing.
Note	This product contains sodium azide: a POISONOUS AND HAZARDOUS SUBSTANCE which should be handled by trained staff only.

Applications

- Western Blot (Cell lysate)

The MAGED2 polyclonal antibody (Cat # PAB4757) is used in Western blot to detect MAGED2 in A-549 cell lysate.

- Immunohistochemistry (Formalin/PFA-fixed paraffin-embedded sections)

Formalin-fixed and paraffin-embedded human hepatocellular carcinoma tissue reacted with MAGED2 polyclonal antibody (Cat # PAB4757), which was peroxidase-conjugated to the secondary antibody, followed by AEC staining. This data demonstrates the use of this antibody for immunohistochemistry; clinical relevance has not been evaluated. HC = hepatocarcinoma.

- Enzyme-linked Immunoabsorbent Assay

Gene Info — MAGED2

Entrez GeneID	10916
Protein Accession#	Q9UNF1
Gene Name	MAGED2
Gene Alias	11B6, BCG1, HCA10, JCL-1, MAGE-D2, MAGED, MGC8386
Gene Description	melanoma antigen family D, 2
Omim ID	300470
Gene Ontology	Hyperlink

Gene Summary

This gene is a member of the MAGED gene family. While the MAGEA and MAGEB genes are silent in normal tissues with the exception of testis and placenta, the MAGED genes are expressed ubiquitously. The MAGED genes are clustered on chromosome Xp11. This gene is located in Xp11.2, a hot spot for X-linked mental retardation (XLMR). Multiple alternatively spliced transcript variants have been found for this gene, however, the full length nature of some variants has not been defined. [provided by RefSeq]

Other Designations

OTTHUMP00000023381|OTTHUMP00000023382|breast cancer associated gene 1|hepatocellular carcinoma associated protein|hepatocellular carcinoma-associated protein HCA10|melanoma-associated antigen D2

Publication Reference

- [Expression pattern and further characterization of human MAGED2 and identification of rodent orthologues.](#)

Langnaese K, Kloos DU, Wehnert M, Seidel B, Wieacker P.

Cytogenetics and Cell Genetics 2001 Dec; 94(3-4):233.

- [A new MAGE gene with ubiquitous expression does not code for known MAGE antigens recognized by T cells.](#)

Lucas S, Brasseur F, Boon T.

Cancer Research 1999 Aug; 59(16):4100.

Disease

- [Breast cancer](#)
- [Breast Neoplasms](#)
- [Genetic Predisposition to Disease](#)
- [Ovarian cancer](#)