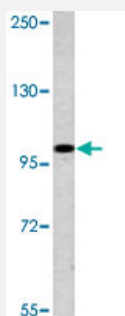


MAGEC1 polyclonal antibody

Catalog # PAB4755

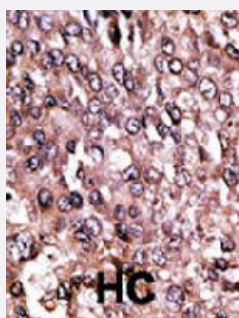
Size 400 uL

Applications



Western Blot (Cell lysate)

Western blot analysis of K-562 cell lysate (35 ug/lane) with MAGEC1 polyclonal antibody (Cat # PAB4755).



Immunohistochemistry (Formalin/PFA-fixed paraffin-embedded sections)

Formalin-fixed and paraffin-embedded human hepatocellular carcinoma tissue reacted with MAGEC1 polyclonal antibody (Cat # PAB4755), which was peroxidase-conjugated to the secondary antibody, followed by AEC staining. This data demonstrates the use of this antibody for immunohistochemistry; clinical relevance has not been evaluated. HC = hepatocarcinoma.

Specification

Product Description	Rabbit polyclonal antibody raised against synthetic peptide of MAGEC1.
Immunogen	A synthetic peptide (conjugated with KLH) corresponding to C-terminus of human MAGEC1.
Host	Rabbit
Reactivity	Human
Form	Liquid
Purification	Protein G purification

Recommend Usage	ELISA (1:1000) Western Blot (1:100-500) Immunohistochemistry (1:50-100) The optimal working dilution should be determined by the end user.
Storage Buffer	In PBS (0.09% sodium azide)
Storage Instruction	Store at 4°C. For long term storage store at -20°C. Aliquot to avoid repeated freezing and thawing.
Note	This product contains sodium azide: a POISONOUS AND HAZARDOUS SUBSTANCE which should be handled by trained staff only.

Applications

- Western Blot (Cell lysate)

Western blot analysis of K-562 cell lysate (35 ug/lane) with MAGEC1 polyclonal antibody (Cat # PAB4755).

- Immunohistochemistry (Formalin/PFA-fixed paraffin-embedded sections)

Formalin-fixed and paraffin-embedded human hepatocellular carcinoma tissue reacted with MAGEC1 polyclonal antibody (Cat # PAB4755), which was peroxidase-conjugated to the secondary antibody, followed by AEC staining. This data demonstrates the use of this antibody for immunohistochemistry; clinical relevance has not been evaluated. HC = hepatocarcinoma.

- Enzyme-linked Immunoabsorbent Assay

Gene Info — MAGEC1

Entrez GeneID	9947
Protein Accession#	NP_005453
Gene Name	MAGEC1
Gene Alias	CT7, MAGE-C1, MGC39366
Gene Description	melanoma antigen family C, 1
Omim ID	300223
Gene Ontology	Hyperlink

Gene Summary

This gene is a member of the melanoma antigen gene (MAGE) family. The proteins of this family are tumor-specific antigens that can be recognized by autologous cytolytic T lymphocytes. This protein contains a large number of unique short repetitive sequences in front of the MAGE-homologous sequence, and therefore is about 800 aa longer than the other MAGE proteins. [provided by RefSeq]

Other Designations

OTTHUMP00000024183

Publication Reference

- [CT7 \(MAGE-C1\) antigen expression in normal and neoplastic tissues.](#)

Jungbluth AA, Chen YT, Busam KJ, Coplan K, Kolb D, Iversen K, Williamson B, Van Landeghem FK, Stockert E, Old LJ.
International Journal of Cancer 2002 Jun; 99(6):839.

Application: IHC-P, Human, Testis

- [Identification of multiple cancer/testis antigens by allogeneic antibody screening of a melanoma cell line library.](#)

Chen YT, Gure AO, Tsang S, Stockert E, Jager E, Knuth A, Old LJ.
PNAS 1998 Jun; 95(12):6919.

- [Identification of a new MAGE gene with tumor-specific expression by representational difference analysis.](#)

Lucas S, De Smet C, Arden KC, Viars CS, Lethe B, Lurquin C, Boon T.
Cancer Research 1998 Feb; 58(4):743.