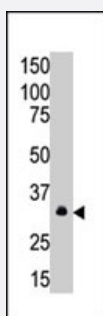


# MAGEA6 polyclonal antibody

Catalog # PAB4748

Size 400 uL

## Applications



### Western Blot (Cell lysate)

The MAGEA6 polyclonal antibody (Cat # PAB4748) is used in Western blot to detect MAGEA6 in A-549 cell lysate.

## Specification

<b>Product Description</b>	Rabbit polyclonal antibody raised against synthetic peptide of MAGEA6.
<b>Immunogen</b>	A synthetic peptide (conjugated with KLH) corresponding to C-terminus of human MAGEA6.
<b>Host</b>	Rabbit
<b>Reactivity</b>	Human
<b>Form</b>	Liquid
<b>Purification</b>	Protein G purification
<b>Recommend Usage</b>	ELISA (1:1000) Western Blot (1:100-500) The optimal working dilution should be determined by the end user.
<b>Storage Buffer</b>	In PBS (0.09% sodium azide)
<b>Storage Instruction</b>	Store at 4°C. For long term storage store at -20°C. Aliquot to avoid repeated freezing and thawing.
<b>Note</b>	This product contains sodium azide: a POISONOUS AND HAZARDOUS SUBSTANCE which should be handled by trained staff only.

## Applications

- Western Blot (Cell lysate)

The MAGEA6 polyclonal antibody (Cat # PAB4748) is used in Western blot to detect MAGEA6 in A-549 cell lysate.

- Enzyme-linked Immunoabsorbent Assay

## Gene Info — MAGEA6

Entrez GeneID [4105](#)

Protein Accession# [NP\\_005354](#)

Gene Name MAGEA6

Gene Alias MAGE-3b, MAGE3B, MAGE6, MGC52297

Gene Description melanoma antigen family A, 6

Omim ID [300176](#)

Gene Ontology [Hyperlink](#)

**Gene Summary** This gene is a member of the MAGEA gene family. The members of this family encode proteins with 50 to 80% sequence identity to each other. The promoters and first exons of the MAGEA genes show considerable variability, suggesting that the existence of this gene family enables the same function to be expressed under different transcriptional controls. The MAGEA genes are clustered at chromosomal location Xq28. They have been implicated in some hereditary disorders, such as dyskeratosis congenita. Two transcript variants encoding the same protein have been identified for this gene. [provided by RefSeq]

**Other Designations** MAGE-6 antigen|OTTHUMP00000024223|melanoma-associated antigen 6

## Publication Reference

- [MAGE-6 encodes HLA-DRbeta1\\*0401-presented epitopes recognized by CD4+ T cells from patients with melanoma or renal cell carcinoma.](#)

Tatsumi T, Kierstead LS, Ranieri E, Gesualdo L, Schena FP, Finke JH, Bukowski RM, Brusica V, Sidney J, Sette A, Logan TF, Kasamon YL, Slingluff CL Jr, Kirkwood JM, Storkus WJ.

Clinical Cancer Research 2003 Mar; 9(3):947.

- [Sequence analysis of the MAGE gene family encoding human tumor-rejection antigens.](#)

Imai Y, Shichijo S, Yamada A, Katayama T, Yano H, Itoh K.

Gene 1995 Jul; 160(2):287.

Application: WB-Ce, WB-Tr, Human, Cancer cells, Mammalian cells