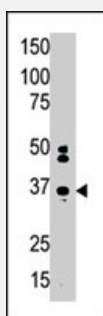


MAGEA2 polyclonal antibody

Catalog # PAB4744

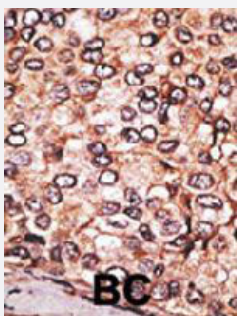
Size 400 uL

Applications



Western Blot (Cell lysate)

The MAGEA2 polyclonal antibody (Cat # PAB4744) is used in Western blot to detect MAGEA2 in HL-60 cell lysate.



Immunohistochemistry (Formalin/PFA-fixed paraffin-embedded sections)

Formalin-fixed and paraffin-embedded human cancer tissue reacted with MAGEA2 polyclonal antibody (Cat # PAB4744), which was peroxidase-conjugated to the secondary antibody, followed by AEC staining. This data demonstrates the use of this antibody for immunohistochemistry; clinical relevance has not been evaluated. BC = breast carcinoma.

Specification

Product Description	Rabbit polyclonal antibody raised against synthetic peptide of MAGEA2.
Immunogen	A synthetic peptide (conjugated with KLH) corresponding to N-terminus of human MAGEA2.
Host	Rabbit
Reactivity	Human
Form	Liquid
Purification	Protein G purification

Recommend Usage	ELISA (1:1000) Western Blot (1:100-500) Immunohistochemistry (1:50-100) The optimal working dilution should be determined by the end user.
Storage Buffer	In PBS (0.09% sodium azide)
Storage Instruction	Store at 4°C. For long term storage store at -20°C. Aliquot to avoid repeated freezing and thawing.
Note	This product contains sodium azide: a POISONOUS AND HAZARDOUS SUBSTANCE which should be handled by trained staff only.

Applications

- Western Blot (Cell lysate)

The MAGEA2 polyclonal antibody (Cat # PAB4744) is used in Western blot to detect MAGEA2 in HL-60 cell lysate.

- Immunohistochemistry (Formalin/PFA-fixed paraffin-embedded sections)

Formalin-fixed and paraffin-embedded human cancer tissue reacted with MAGEA2 polyclonal antibody (Cat # PAB4744), which was peroxidase-conjugated to the secondary antibody, followed by AEC staining. This data demonstrates the use of this antibody for immunohistochemistry; clinical relevance has not been evaluated. BC = breast carcinoma.

- Enzyme-linked Immunoabsorbent Assay

Gene Info — MAGEA2

Entrez GeneID	4101
Protein Accession#	NP_005352
Gene Name	MAGEA2
Gene Alias	MAGE2, MAGEA2A, MGC131923
Gene Description	melanoma antigen family A, 2
Omim ID	300173
Gene Ontology	Hyperlink

Gene Summary

This gene is a member of the MAGEA gene family. The members of this family encode proteins with 50 to 80% sequence identity to each other. The promoters and first exons of the MAGEA genes show considerable variability, suggesting that the existence of this gene family enables the same function to be expressed under different transcriptional controls. The MAGEA genes are clustered at chromosomal location Xq28. They have been implicated in some hereditary disorders, such as dyskeratosis congenita. This gene has two identical copies at different loci. Alternatively spliced transcript variants encoding the same protein have been identified for this gene. [provided by RefSeq]

Other Designations

OTTHUMP00000024219|melanoma antigen 2|melanoma-associated antigen 2

Publication Reference

- [The melanoma antigen gene \(MAGE\) family is clustered in the chromosomal band Xq28.](#)

Rogner UC, Wilke K, Steck E, Korn B, Poustka A.

Genomics 1995 Oct; 29(3):725.

- [Sequence and expression pattern of the human MAGE2 gene.](#)

De Smet C, Lurquin C, van der Bruggen P, De Plaen E, Brasseur F, Boon T.

Immunogenetics 1994 Jan; 39(2):121.

Application: WB-Ce, WB-Ti, Human, Laryngeal tumors, Sarcomas, Small-cell lung carcinomas

- [Structure, chromosomal localization, and expression of 12 genes of the MAGE family.](#)

De Plaen E, Arden K, Traversari C, Gaforio JJ, Szikora JP, De Smet C, Brasseur F, van der Bruggen P, Lethe B, Lurquin C, et al..

Immunogenetics 1994 Jan; 40(5):360.