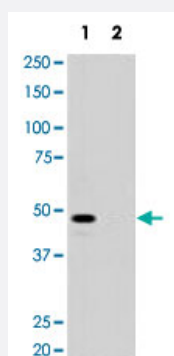


# MAGEA11 polyclonal antibody

Catalog # PAB4742

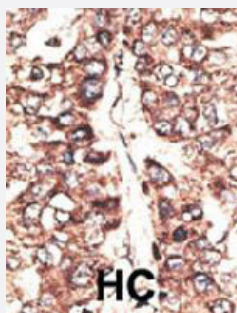
Size 400 uL

## Applications



### Western Blot (Cell lysate)

Western blot analysis of pre-incubated with (2) and without (1) blocking peptide in 293 cell lysate with MAGEA11 polyclonal antibody (Cat # PAB4742).



### Immunohistochemistry (Formalin/PFA-fixed paraffin-embedded sections)

Formalin-fixed and paraffin-embedded human hepatocellular carcinoma tissue reacted with MAGEA11 polyclonal antibody (Cat # PAB4742), which was peroxidase-conjugated to the secondary antibody, followed by DAB staining. This data demonstrates the use of this antibody for immunohistochemistry; clinical relevance has not been evaluated. HC = hepatocarcinoma.

## Specification

Product Description	Rabbit polyclonal antibody raised against synthetic peptide of MAGEA11.
Immunogen	A synthetic peptide (conjugated with KLH) corresponding to N-terminus of human MAGEA11.
Host	Rabbit
Reactivity	Human
Form	Liquid
Purification	Protein G purification

<b>Recommend Usage</b>	ELISA (1:1000) Western Blot (1:50-100) Immunohistochemistry (1:50-100) The optimal working dilution should be determined by the end user.
<b>Storage Buffer</b>	In PBS (0.09% sodium azide)
<b>Storage Instruction</b>	Store at 4°C. For long term storage store at -20°C. Aliquot to avoid repeated freezing and thawing.
<b>Note</b>	This product contains sodium azide: a POISONOUS AND HAZARDOUS SUBSTANCE which should be handled by trained staff only.

## Applications

- Western Blot (Cell lysate)

Western blot analysis of pre-incubated with (2) and without (1) blocking peptide in 293 cell lysate with MAGEA11 polyclonal antibody (Cat # PAB4742).

- Immunohistochemistry (Formalin/PFA-fixed paraffin-embedded sections)

Formalin-fixed and paraffin-embedded human hepatocellular carcinoma tissue reacted with MAGEA11 polyclonal antibody (Cat # PAB4742), which was peroxidase-conjugated to the secondary antibody, followed by DAB staining. This data demonstrates the use of this antibody for immunohistochemistry; clinical relevance has not been evaluated. HC = hepatocarcinoma.

- Enzyme-linked Immunoabsorbent Assay

## Gene Info — MAGEA11

<b>Entrez GeneID</b>	<a href="#">4110</a>
<b>Protein Accession#</b>	<a href="#">NP_005357</a>
<b>Gene Name</b>	MAGEA11
<b>Gene Alias</b>	MAGE-11, MAGE11, MAGEA-11, MGC10511
<b>Gene Description</b>	melanoma antigen family A, 11
<b>Omim ID</b>	<a href="#">300344</a>
<b>Gene Ontology</b>	<a href="#">Hyperlink</a>

**Gene Summary**

This gene is a member of the MAGEA gene family. The members of this family encode proteins with 50 to 80% sequence identity to each other. The promoters and first exons of the MAGEA genes show considerable variability, suggesting that the existence of this gene family enables the same function to be expressed under different transcriptional controls. The MAGEA genes are clustered at chromosomal location Xq28. They have been implicated in some hereditary disorders, such as dyskeratosis congenita. Two transcript variants encoding different isoforms have been found for this gene. [provided by RefSeq]

**Other Designations**

MAGE-11 antigen|OTTHUMP00000024217|melanoma-associated antigen 11

**Publication Reference**

- [The melanoma antigen gene \(MAGE\) family is clustered in the chromosomal band Xq28.](#)

Rogner UC, Wilke K, Steck E, Korn B, Poustka A.

Genomics 1995 Oct; 29(3):725.

- [Structure, chromosomal localization, and expression of 12 genes of the MAGE family.](#)

De Plaen E, Arden K, Traversari C, Gaforio JJ, Szikora JP, De Smet C, Brasseur F, van der Bruggen P, Lethe B, Lurquin C, et al..

Immunogenetics 1994 Jan; 40(5):360.