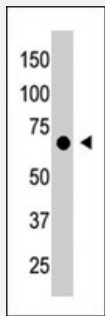


# CRY1 polyclonal antibody

Catalog # PAB4717

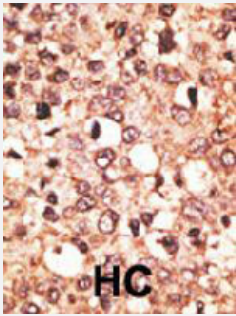
Size 400 uL

## Applications



### Western Blot (Tissue lysate)

The CRY1 polyclonal antibody (Cat # PAB4717) is used in Western blot to detect CRY1 in placenta tissue lysate.



### Immunohistochemistry (Formalin/PFA-fixed paraffin-embedded sections)

Formalin-fixed and paraffin-embedded human hepatocellular carcinoma tissue reacted with CRY1 polyclonal antibody (Cat # PAB4717), which was peroxidase-conjugated to the secondary antibody, followed by AEC staining. This data demonstrates the use of this antibody for immunohistochemistry; clinical relevance has not been evaluated. HC = hepatocarcinoma.

## Specification

<b>Product Description</b>	Rabbit polyclonal antibody raised against synthetic peptide of CRY1.
<b>Immunogen</b>	A synthetic peptide (conjugated with KLH) corresponding to C-terminus of human CRY1.
<b>Host</b>	Rabbit
<b>Reactivity</b>	Human
<b>Form</b>	Liquid
<b>Purification</b>	Protein G purification

<b>Recommend Usage</b>	ELISA (1:1000) Western Blot (1:100-500) Immunohistochemistry (1:50-100) The optimal working dilution should be determined by the end user.
<b>Storage Buffer</b>	In PBS (0.09% sodium azide)
<b>Storage Instruction</b>	Store at 4°C. For long term storage store at -20°C. Aliquot to avoid repeated freezing and thawing.
<b>Note</b>	This product contains sodium azide: a POISONOUS AND HAZARDOUS SUBSTANCE which should be handled by trained staff only.

## Applications

- Western Blot (Tissue lysate)

The CRY1 polyclonal antibody (Cat # PAB4717) is used in Western blot to detect CRY1 in placenta tissue lysate.

- Immunohistochemistry (Formalin/PFA-fixed paraffin-embedded sections)

Formalin-fixed and paraffin-embedded human hepatocellular carcinoma tissue reacted with CRY1 polyclonal antibody (Cat # PAB4717), which was peroxidase-conjugated to the secondary antibody, followed by AEC staining. This data demonstrates the use of this antibody for immunohistochemistry; clinical relevance has not been evaluated. HC = hepatocarcinoma.

- Enzyme-linked Immunoabsorbent Assay

## Gene Info — CRY1

<b>Entrez GeneID</b>	<a href="#">1407</a>
<b>Protein Accession#</b>	<a href="#">NP_004066:Q16526</a>
<b>Gene Name</b>	CRY1
<b>Gene Alias</b>	PHLL1
<b>Gene Description</b>	cryptochrome 1 (photolyase-like)
<b>Omim ID</b>	<a href="#">601933</a>
<b>Gene Ontology</b>	<a href="#">Hyperlink</a>
<b>Other Designations</b>	-

## Publication Reference

- [Specific binding of dehydroepiandrosterone to the N terminus of the microtubule-associated protein MAP2.](#)

Laurine E, Lafitte D, Gregoire C, Seree E, Loret E, Douillard S, Michel B, Briand C, Verdier JM.

The Journal of Biological Chemistry 2003 Aug; 278(32):29979.

Application: WB-Re, Recombinant protein

- [Light-independent role of CRY1 and CRY2 in the mammalian circadian clock.](#)

Griffin EA Jr, Staknis D, Weitz CJ.

Science 1999 Oct; 286(5440):768.

- [Characterization of photolyase/blue-light receptor homologs in mouse and human cells.](#)

Kobayashi K, Kanno S, Smit B, van der Horst GT, Takao M, Yasui A.

Nucleic Acids Research 1998 Nov; 26(22):5086.

Application: IF, WB, Human, Mouse, HeLa cells, Mouse C3H10T1/2 cells, Mouse liver

## Pathway

- [Circadian rhythm - mammal](#)

## Disease

- [Bipolar Disorder](#)
- [Chronobiology Disorders](#)
- [Depressive Disorder](#)
- [Genetic Predisposition to Disease](#)
- [Heroin Dependence](#)
- [Mood Disorders](#)
- [Opioid-Related Disorders](#)
- [Prostatic Neoplasms](#)
- [Sleep Disorders](#)

- [Tobacco Use Disorder](#)