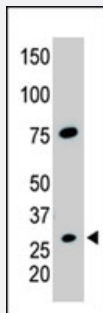


CDX1 polyclonal antibody

Catalog # PAB4713

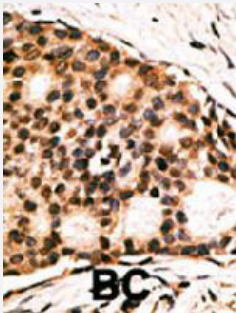
Size 400 uL

Applications



Western Blot (Cell lysate)

The CDX1 polyclonal antibody (Cat # PAB4713) is used in Western blot to detect CDX1 in HL-60 cell lysate.



Immunohistochemistry (Formalin/PFA-fixed paraffin-embedded sections)

Formalin-fixed and paraffin-embedded human cancer tissue reacted with CDX1 polyclonal antibody (Cat # PAB4713), which was peroxidase-conjugated to the secondary antibody, followed by AEC staining. This data demonstrates the use of this antibody for immunohistochemistry; clinical relevance has not been evaluated. BC = breast carcinoma.

Specification

Product Description	Rabbit polyclonal antibody raised against synthetic peptide of CDX1.
Immunogen	A synthetic peptide (conjugated with KLH) corresponding to C-terminus of human CDX1.
Host	Rabbit
Reactivity	Human
Form	Liquid
Purification	Protein G purification

Recommend Usage	ELISA (1:1000) Western Blot (1:100-500) Immunohistochemistry (1:50-100) The optimal working dilution should be determined by the end user.
Storage Buffer	In PBS (0.09% sodium azide)
Storage Instruction	Store at 4°C. For long term storage store at -20°C. Aliquot to avoid repeated freezing and thawing.
Note	This product contains sodium azide: a POISONOUS AND HAZARDOUS SUBSTANCE which should be handled by trained staff only.

Applications

- Western Blot (Cell lysate)

The CDX1 polyclonal antibody (Cat # PAB4713) is used in Western blot to detect CDX1 in HL-60 cell lysate.

- Immunohistochemistry (Formalin/PFA-fixed paraffin-embedded sections)

Formalin-fixed and paraffin-embedded human cancer tissue reacted with CDX1 polyclonal antibody (Cat # PAB4713), which was peroxidase-conjugated to the secondary antibody, followed by AEC staining. This data demonstrates the use of this antibody for immunohistochemistry; clinical relevance has not been evaluated. BC = breast carcinoma.

- Enzyme-linked Immunoabsorbent Assay

Gene Info — CDX1

Entrez GeneID	1044
Protein Accession#	P47902
Gene Name	CDX1
Gene Alias	MGC116915
Gene Description	caudal type homeobox 1
Omim ID	600746
Gene Ontology	Hyperlink
Gene Summary	This gene is a member of the caudal-related homeobox transcription factor gene family. The encoded DNA-binding protein regulates intestine-specific gene expression and enterocyte differentiation. It has been shown to induce expression of the intestinal alkaline phosphatase gene, and inhibit beta-catenin/T-cell factor transcriptional activity. [provided by RefSeq]

Other Designations

caudal type homeo box transcription factor 1|caudal type homeobox transcription factor 1|caudal-type homeobox protein CDX1

Publication Reference

- [Transcriptional control of the B3GALT5 gene by a retroviral promoter and methylation of distant regulatory elements.](#)

Zulueta A, Caretti A, Signorelli P.

FASEB Journal 2014 Feb; 28(2):946.

Application: WB-Ce, Human, MCF-7, MDA-MB-231, MKN-45, KATOIII, HuCC-T1, HT-29, HCT-15, COLO-205, SW-116, HEK-293T/17, Huh7, Hep-3B cells

- [Cdx1 homeobox gene during human colon cancer progression.](#)

Domon-Dell C, Schneider A, Moucadel V, Guerin E, Guenot D, Aguilon S, Duluc I, Martin E, Iovanna J, Launay JF, Duclos B, Chenard MP, Meyer C, Oudet P, Kedinger M, Gaub MP, Freund JN.

Oncogene 2003 Sep; 22(39):7913.

Application: IHC-P, WB, Human, Human colon cancer

- [DNA methylation down-regulates CDX1 gene expression in colorectal cancer cell lines.](#)

Suh ER, Ha CS, Rankin EB, Toyota M, Traber PG.

The Journal of Biological Chemistry 2002 Sep; 277(39):35795.

Application: WB-Ce, Human, T84, Caco2, SW480, HCT116, ColoDM, DLD1, HeLa cells

- [Expression of Cdx1 and Cdx2 mRNAs and relevance of this expression to differentiation in human gastrointestinal mucosa--with special emphasis on participation in intestinal metaplasia of the human stomach.](#)

Mizoshita T, Inada K, Tsukamoto T, Kodera Y, Yamamura Y, Hirai T, Kato T, Joh T, Itoh M, Tatematsu M.

Gastric Cancer 2001 Dec; 4(4):185.