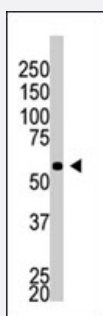


BACE2 polyclonal antibody

Catalog # PAB4694

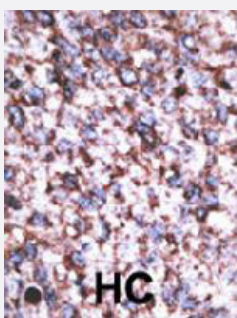
Size 400 uL

Applications



Western Blot (Cell lysate)

The BACE2 polyclonal antibody (Cat # PAB4694) is used in Western blot to detect BACE2 in A-549 cell lysate.



Immunohistochemistry (Formalin/PFA-fixed paraffin-embedded sections)

Formalin-fixed and paraffin-embedded human hepatocellular carcinoma tissue reacted with BACE2 polyclonal antibody (Cat # PAB4694), which was peroxidase-conjugated to the secondary antibody, followed by AEC staining. This data demonstrates the use of this antibody for immunohistochemistry; clinical relevance has not been evaluated. HC = hepatocarcinoma.

Specification

Product Description	Rabbit polyclonal antibody raised against synthetic peptide of BACE2.
Immunogen	A synthetic peptide (conjugated with KLH) corresponding to C-terminus of human BACE2.
Host	Rabbit
Reactivity	Human
Form	Liquid
Purification	Protein G purification

Recommend Usage	ELISA (1:1000) Western Blot (1:100-500) Immunohistochemistry (1:50-100) The optimal working dilution should be determined by the end user.
Storage Buffer	In PBS (0.09% sodium azide)
Storage Instruction	Store at 4°C. For long term storage store at -20°C. Aliquot to avoid repeated freezing and thawing.
Note	This product contains sodium azide: a POISONOUS AND HAZARDOUS SUBSTANCE which should be handled by trained staff only.

Applications

- Western Blot (Cell lysate)

The BACE2 polyclonal antibody (Cat # PAB4694) is used in Western blot to detect BACE2 in A-549 cell lysate.

- Immunohistochemistry (Formalin/PFA-fixed paraffin-embedded sections)

Formalin-fixed and paraffin-embedded human hepatocellular carcinoma tissue reacted with BACE2 polyclonal antibody (Cat # PAB4694), which was peroxidase-conjugated to the secondary antibody, followed by AEC staining. This data demonstrates the use of this antibody for immunohistochemistry; clinical relevance has not been evaluated. HC = hepatocarcinoma.

- Enzyme-linked Immunoabsorbent Assay

Gene Info — BACE2

Entrez GeneID	25825
Protein Accession#	Q9NZL2
Gene Name	BACE2
Gene Alias	AEPLC, ALP56, ASP1, ASP21, BAE2, CDA13, CEAP1, DRAP
Gene Description	beta-site APP-cleaving enzyme 2
Omim ID	605668
Gene Ontology	Hyperlink

Gene Summary

Cerebral deposition of amyloid beta peptide is an early and critical feature of Alzheimer's disease and a frequent complication of Down syndrome. Amyloid beta peptide is generated by proteolytic cleavage of amyloid precursor protein by 2 proteases, one of which is the protein encoded by this gene. This gene localizes to the 'Down critical region' of chromosome 21. The encoded protein, a member of the peptidase A1 protein family, is a type I integral membrane glycoprotein and aspartic protease. Three transcript variants encoding different isoforms have been described for this gene. [provided by RefSeq]

Other Designations

56 kDa aspartic-like protease|Down syndrome region aspartic protease|aspartyl protease 1|beta secretase 2|beta-site amyloid beta A4 precursor protein-cleaving enzyme 2|memapsin-1|membrane-associated aspartic protease 1|transmembrane aspartic proteinase As

Disease

- [Alzheimer disease](#)
- [Cardiovascular Diseases](#)
- [Celiac Disease](#)
- [Diabetes Complications](#)
- [Diabetes Mellitus](#)
- [Edema](#)
- [Genetic Predisposition to Disease](#)
- [Metabolic Syndrome X](#)
- [Neoplasms](#)
- [Osteoporosis](#)